

20 February 2016

H.W. Adrienne Staples
South Wairarapa District Council
PO Box 6
Martinborough, 5741



Dear Adrienne,

The Wairarapa Arts Festival Trust would like to make a submission to South Wairarapa District Council's Annual Plan for funding of \$15,000 toward the Kokomai Creative Festival, Wairarapa.

The inaugural Kokomai Creative Festival held in October 2015 was a great success both financially and through the increased audience participation. The Festival delivered on the Wairarapa Arts Festival Trust's goals of providing artistic opportunity to the people of the Wairarapa as participants and audience.

We were proud to deliver a variety of high quality events across the South Wairarapa region, including the outdoor visual art exhibition, a free family Alice in Wonderland Day, Booktown, Greytown Town Hall exhibitions and international and national acts in Featherston, Martinborough, Greytown and out at Pirinoa Community Hall.

The third Festival to be held over 10 days in October 2015 will follow a similar format in terms of regional distribution and opportunity for residents of the South Wairarapa area.

I have a busy year ahead planning the off year event, which will be spectacular, and preparing for the 2017 Festival. I will be attending the Australian Performing Arts Market in Brisbane and the PANNZ Performing Arts Market in Wellington this month, with other New Zealand Festival Directors. I will be strengthening our partnerships for future collaborations and meeting with producers.

The Trustees request an opportunity to present a submission to the South Wairarapa District Council in support of the application for funding of \$15,000.

Yours sincerely



Heidi Holbrook
Festival Director

Kim Whiteman- Policy and Reporting Manager

From: Heidi Holbrook <heidi@kokomai.co.nz>
Sent: Wednesday, 9 March 2016 3:49 p.m.
To: Kim Whiteman- Policy and Reporting Manager
Subject: Re: SWDC Funding request
Attachments: Audited Report for the Wairarapa Arts Festival Trust 2015[1].pdf

Hi Kim,

The funding is for the combination of both the festival off year, where we produce an event that costs approx 30-40K to stage and the festival on year.

We are currently working on our 2016/17 budgets and will have these available towards the end of the month, we are just waiting on some show costing figures before the draft is ready.

The funding goes towards the running costs of the festival. I have attached a recently audited accounts.

Let me know if you have any other questions,

Regards

Heidi Holbrook

Festival Director



Mobile +6421665593

PO Box 18, Carterton 5743, Wairarapa

www.kokomai.co.nz | [Facebook/Kokomai](https://www.facebook.com/Kokomai)

From: "Kim.Whiteman@swdc.govt.nz" <Kim.Whiteman@swdc.govt.nz>

Date: Tuesday, 8 March 2016 10:40 am

To: Heidi Holbrook <heidi@kokomai.co.nz>

Subject: SWDC Funding request

Good morning,

Thank you for your letter regarding funding for the Kokomai festival. Can you please confirm the following:

Is the funding for the 2016 off year event or the 2017 Kokomai Festival or a combination of the both.

Are there particular costs of the festival this money is tagged to cover?

Have you completed a festival budget?

Do you have financial statements available for the 2015 Festival.

Many Thanks

Kim Whiteman
Policy and Reporting Manager



South Wairarapa District Council

06 306 9611

PO Box 6 Martinborough 5741

19 Kitchener Street Martinborough 5711

www.swdc.govt.nz

Please consider the environment before printing this e-Mail.

This message is intended solely for the recipient and may contain confidential or privileged information. If you have received this e-mail in error please notify the sender and delete

Wairarapa Arts Festival Trust 2016-2017

The Wairarapa Arts Festival Trust has now delivered two successful Kokomai Creative Festivals over 20 days during October 2013 and 2015, engaging over 10,000 participants in the arts, right across our region.

The Wairarapa Arts Festival Trust is evolving into a Trust that not only delivers the Kokomai Creative Festival biennially but into an organisation which has a wider arts focus, being an advocate for the arts, whilst annually delivering a variety of high quality creative events and activities and by promoting the arts, heritage and culture of the Wairarapa.

The funding that we are requesting through this application is for sustaining the ongoing costs through our two year cycle. Increasing our scope to delivering more than the Kokomai Creative Festival means we are looking for an increase of the financial resourcing of our organization it also means we are able to increase our capability to attract more visitors to our region, which will have a positive economic effect.

Activities 2016/17

Assist with the promotion of:

- The International Arts Festival, Booktown, Yarns in Barns, Pacific Studios, Aratoi events & other high quality events or projects we are asked to promote

Significant 2016 Event

- October 2016 – delivery of a significant ‘in between’ festival year event – a critically acclaimed music, theatre, film show called ‘Daffodils’. This show would not be seen in our region without the support of Kokomai and our funders. (Carterton Events Centre)

Development of a 2018 Festival of sustainable lifestyles, artisans (name tbc)

(note: biennial to Kokomai) This new festival, is based around artisan workshops, sustainable gardening and eco architecture. This event will focus on learning lost arts and will promote local and out of town participation. This festival will be presented right across the region and will be accessible to all our community, educating and enhancing our well being, through a breath of events.

Development of an Aspiring Conversations event

An ideas event attracting stimulating high profile and local speakers around topics such as climate change, creativity and innovation and how they drive prosperity and debates on topical social issues.

Wairarapa Art and Artisan Guide

- Market research into developing a 2017 Art and Artisan guide and website including the whole of the Wairarapa region. Produced annually, with funding support from our Councils and through selling listings for artists and arts organisations. This guide would be distributed across the Wairarapa region and throughout the Wellington information centres, libraries, accommodation providers, cafes, galleries and art organisations.

Planning the 2017 Festival

- Festival Director attended the Australian Performing Arts Market in Brisbane, NZ Performing Arts Market and will be attending the Nelson and Hawkes Bay Arts festivals later this year, selecting events to bring to the 2017 Kokomai Creative Festival. Engaging with Wairarapa artists on the development of projects for the 2017 festival. Sponsorship drive starts Aug 2016.

Flag Project – Connecting our towns in celebration of the arts – 50 Festival flags designed and made.

Resourcing WAFT two year cycle summary

2016	Project	Budget	Funding sort from SWDC
	Kokomai Creative Festival 2017, inc development of Artisan Festival and aspiring conversations event		15,000
	Art and Artisan Guide/website	35,000	5,000
	Flags project	8,500	2,500
Total			22,500

2017	Project	Budget	Funding sort from SWDC
	Kokomai Creative Festival 2017, inc ongoing organization of the Artisan Festival and Aspiring conversations event		20,000
	Produce and distribute the 2017 Art and Artisan Guide		
Total			20,000

NB

Applied to all Councils for the same

Annual Report

The Wairarapa Arts Festival Trust

31 December 2015

Prepared by Edwin Read



Independent Auditor's Report

To the Members of the Wairarapa Arts Festival Trust.

Report on the Financial Statements

We have audited the financial statements of the Wairarapa Arts Festival Trust on the attached pages, which comprise the balance sheet as at 31 December 2015, and the income statement for the 21 months then ended, and a summary of significant accounting policies and other explanatory information.

Trustee's Responsibility for the Financial Statements

The Trustees are responsible for the preparation of these financial statements in accordance with generally accepted accounting practice in New Zealand and that give a true and fair view of the matters to which they relate, and for such internal control as the committee determine is necessary to enable the preparation of financial statements that are free from material misstatement, whether due to fraud or error.

Auditor's Responsibility

Our responsibility is to express an opinion on these financial statements based on our audit. We conducted our audit in accordance with International Standards on Auditing (New Zealand). Those standards require that we comply with ethical requirements and plan and perform the audit to obtain reasonable assurance about whether the financial statements are free from material misstatement.

An audit involves performing procedures to obtain audit evidence about the amounts and disclosures in the financial statements. The procedures selected depend on the auditor's judgement, including the assessment of the risks of material misstatement of the financial statements, whether due to fraud or error. In making those risk assessments, the auditor considers internal control relevant to the entity's preparation of financial statements that give fair view of the matters to which they relate in order to design audit procedures that are appropriate in the circumstances, but not for the purpose of expressing an opinion on the effectiveness of the entity's internal control. An audit also includes evaluating the appropriateness of accounting policies used and the reasonableness of accounting estimates, as well as evaluating the overall presentation of the financial statements.

We believe that the audit evidence we have obtained is sufficient and appropriate to provide a basis for our audit opinion on financial position and financial performance.

Other than in our capacity as auditor we have no relationship with, or interests in, the Wairarapa Arts Festival Trust.

Unqualified Opinion on Financial Position and Financial Performance

In our opinion, the financial statements on the following pages present fairly, in all material respects, the financial position of the Wairarapa Arts Festival Trust as at 31 December 2015, and its financial performance for the 21 months ended in accordance with generally accepted accounting practice in New Zealand.

26 February 2016
Masterton

81 Queen Street PO Box 54 Masterton 5840 New Zealand
Tel 06 377 3199 Free 0800 SELLAR Fax 06 378 8326 www.sellar.co.nz



PRINCIPALS **Dominic C. Stewart** BCA CA | **Graeme A. Bayliss** BBS CA | **Craig A. Clouston** BCA CA

Profit & Loss
The Wairarapa Arts Festival Trust
1 April 2014 to 31 December 2015

	31 Dec 2015	31 Mar 2014
Income		
Benefactors & Patrons	38,130	700
Box Office Income	70,581	29,899
Grant Income	69,661	28,500
Interest Income	52	84
Trust House Community Grants	73,000	30,000
Eastern and Central Community Grants	20,000	4,000
Merchandise	- 384	-
Show Sponsor	44,244	48,000
Non-Show Sponsorship & Corporate Patrons	27,569	60,660
Venue Sponsorship	-	15,000
Sundry Income	-	1,070
Total Income	342,853	217,913
Less Cost of Sales		
Artist Accommodation & Travel	8,383	-
Artist Fees	96,027	68,436
Artist Per Diems	661	-
Freight, Transport & Staging	4,219	-
Royalties/APRA	1,065	1,309
Technical Director	10,750	10,000
Technical Team - Technicians	6,716	5,680
Venue Hire	2,268	25,527
Total Cost of Sales	130,090	110,951
Gross Profit	212,763	106,962
Plus Other Income		
Workshops	- 238	132
Total Other Income	- 238	132
Less Operating Expenses		
Accommodation & Travel	7,164	1,628
Accounting Software	1,050	591
Advertising	15,123	63,234
Aspiring Conventions	791	849
Audit Fees	1,604	-
Bank Fees	400	113
Banners, Flags, Posters, Flyers, T-Shirts & Signage	16,222	3,985
Computer Expenses	86	-
Design & Brand Development	15,698	9,257
Entertainment	7	-
Event Insurance	610	-
Festival Director fees	70,263	-
Festival Launch	118	-
General Expenses	1,372	368
Insurance	-	525
Office Expenses	244	-



This statement is to be read in conjunction with the Notes to the Financial Statements and the accompanying Audit Report.

Other Marketing	4,952	758
Patron Promo Functions	5,231	-
PP&S	2,555	656
Programme Brochure	10,318	8,591
Programme Launch	4,882	180
Staffing: Wages & PAYE - Other	49,695	-
Storm Three Pty Ltd	-	42,300
Trustee & AGM Expenses	-	91
Telephone & Internet	5,908	-
Website	2,500	1,526
Website Expenses	3,000	-
Total Operating Expenses	219,796	134,653
<hr/>		
Net Profit	- 7,270	- 27,560
<hr/>		



This statement is to be read in conjunction with the Notes to the Financial Statements and the accompanying Audit Report.

Movements in Equity
The Wairarapa Arts Festival Trust
As at 31 December 2015

	31 Dec 2015	31 Mar 2014
Equity		
Opening Balance	8,061	35,621
Current Period Earnings	- 7,270 -	27,560
Total Equity	791	8,061



This statement is to be read in conjunction with the Notes to the Financial Statements and the accompanying Audit Report.

Balance Sheet
The Wairarapa Arts Festival Trust
As at 31 December 2015

31 Dec 2015


31 Mar 2014

Assets

Bank		
Wairarapa Art Festival Trust	2,196	7,275
Total Bank	2,196	7,275
Current Assets		
Accounts Receivable	180	-
Withholding tax paid	25	18
Total Current Assets	205	18
Total Assets	2,401	7,293

Liabilities

Current Liabilities		
Accounts Payable	71	863
Friends of Kokomai	3,432	-
GST	- 1,894	- 1,631
Total Current Liabilities	1,610	768
Total Liabilities	1,610	- 768
Net Assets	791	8,061
Equity		
Current Year Earnings	- 7,270	- 27,560
Retained Earnings	8,061	35,621
Total Equity	791	8,061

Signed:  Chairperson / Trustee

Signed: Trustee



This statement is to be read in conjunction with the Notes to the Financial Statements and the accompanying Audit Report.

Notes to the Financial Statements
The Wairarapa Arts Festival Trust
For the year ended 31 December 2015

1. Statement of Accounting Policies:

REPORTING ENTITY

The Wairarapa Arts Festival Trust is a Charitable Trust incorporated under the Charitable Trust Act 1957. These Financial Statements are general purpose financial statements and have been prepared in accordance with generally accepted accounting practice in New Zealand. The Trust is involved in the running of a bi-annual creative festival (Kokomai) in the Wairarapa Region.

STATEMENT OF COMPLIANCE AND BASIS OF PREPARATION

The accounting principles recognised as appropriate for the measurement and reporting of the financial performance and financial position on an historical cost basis are followed by the Trust, unless otherwise stated below. Accrual accounting is used to match expenses and revenues.

2. Changes in Accounting Policies:

There have been no changes in Accounting Policies. All policies have been applied on bases consistent with those used in previous years.

3. Goods and Services Tax:

These financial statements have been prepared on a GST exclusive basis with the exception of Accounts Receivable and Accounts Payable.

4. Accounts Receivable:

Receivables are stated at their estimated realisable value. Bad debts are written off in the year in which they are identified.

5. Audit:

These financial statements have been subject to audit, please refer to Auditor's Report.

6. Contingent Liabilities:

At balance date contingent liabilities have been estimated at nil.

7. Reporting Period

These financial statements have been prepared for a reporting period of 21 Months, from 1 April 2014 to 31 December 2015. The comparative figures relate to the previous 12 month reporting period ending 31 March 2014.

This change in accounting period aligns the reporting with the biannual festival period and will reflect the performance of each festival in the future.



9 May 2016
✓
(B)

South Wairarapa District Council,

P.O. Box 6,

MARTINBOROUGH, 5741

(Attention: Kim Whiteman, Policy & Reporting Manager)

Re: Proposed Passage-way linking the Fell and Heritage Museums)

The purpose of the Featherston Heritage Museum is to preserve, display and explain local history. The Featherston Military Camp was the largest training facility in New Zealand. Built in less than six months in 1915, over 60,000 men trained there and for many it was their last home in New Zealand. In 1942, the Camp was used to inter Japanese prisoners for the duration of World War II. The prisoners 'rioted' in 1943 resulting in 43 deaths. A century later, nothing remains at the camp site. Only the Featherston Heritage Museum and its collection of artifacts remain to tell the story.

The Heritage and Fell have signed a Memorandum of Understanding to work together in the future. The Heritage is in the process of an upgrade. New flashings and repairs to the exterior of the building have been completed, new piles have been added where necessary and insulation of the ceiling has been done. Members have painted the lean-to and re-organised the displays within the Museum. Contractors have been given the go ahead to paint the ceiling of the main room and install under-floor insulation.

With the closing of the World War I exhibition at Aratoi in July, it is likely that some of the displays will be gifted to the Featherston Heritage Museum.

At present, the Heritage is open 10 am to 2 pm weekends and public holidays and other times by arrangement. The Fell with a combination of volunteers and paid staff is open longer hours and 364 days a year. A linking passage-way would enable visitors to the Fell access to the Heritage.

The proposal is to have the one entrance, one ticket and to share the income. This would give better utilisation of resources, enable far more visitors to the Heritage and provide a unique experience with the Fell, First World War, Japanese Prisoner Camp and Featherston History under one roof.

After considering different designs for linking the buildings, Mr Jim Johnson's plan

appears to be the most suited. It offers improved viewing of the Fell Engine, provides a good link and provides a sheltered courtyard. It would tie the two buildings together in a visually appealing way and appears good value for the price quoted.

Should the Council give the go ahead, we would start fund raising for any shortfall.

Hoping this project will receive your favourable consideration.

A handwritten signature in black ink, reading "Fraser Donald". The script is cursive and fluid, with the first name "Fraser" and the last name "Donald" clearly distinguishable.

(Fraser Donald)

Vice President of the Heritage Museum & Project Co-ordinator

B

JOHNSON BROS FEATHERSTON 2002 LTD. T/AS



JOHNSON BROTHERS FEATHERSTON
EST 1913



PO BOX 267
MARTINBOROUGH

OFFICE 06 3039049 WAYNE 027 4581 729

EMAIL: jbro@vodafone.co.nz

WEB: www.johnsonbrothers.co.nz

FOURTH GENERATION BUILDERS

7th March 2016

re: Additions to Fell Museum

GENERAL

To construct a covered way as link joining the FELL museum with the HERITAGE museum.
The existing Fell Museum main public entrance to be the entrance to the combined museums.
The intention is to leave the existing landscaped gardens as an enclosed outdoor feature.

SCOPE OF WORKS

To remove existing FELL ENGINE entrance.
To excavate for new footings.
Construct new covered way as per plans submitted No's 1 to 4.
Construction is in light timber construction on a slab on ground foundation.
Exterior walls to be sheathed to match existing.
Exterior windows to be aluminium matching existing theme.
Roof to have minimal pitch so existing roof lines are visible behind.
Shift existing door set at Heritage museum and form foyer entrance.

Our price to complete the above is \$51,024.00 plus GST.

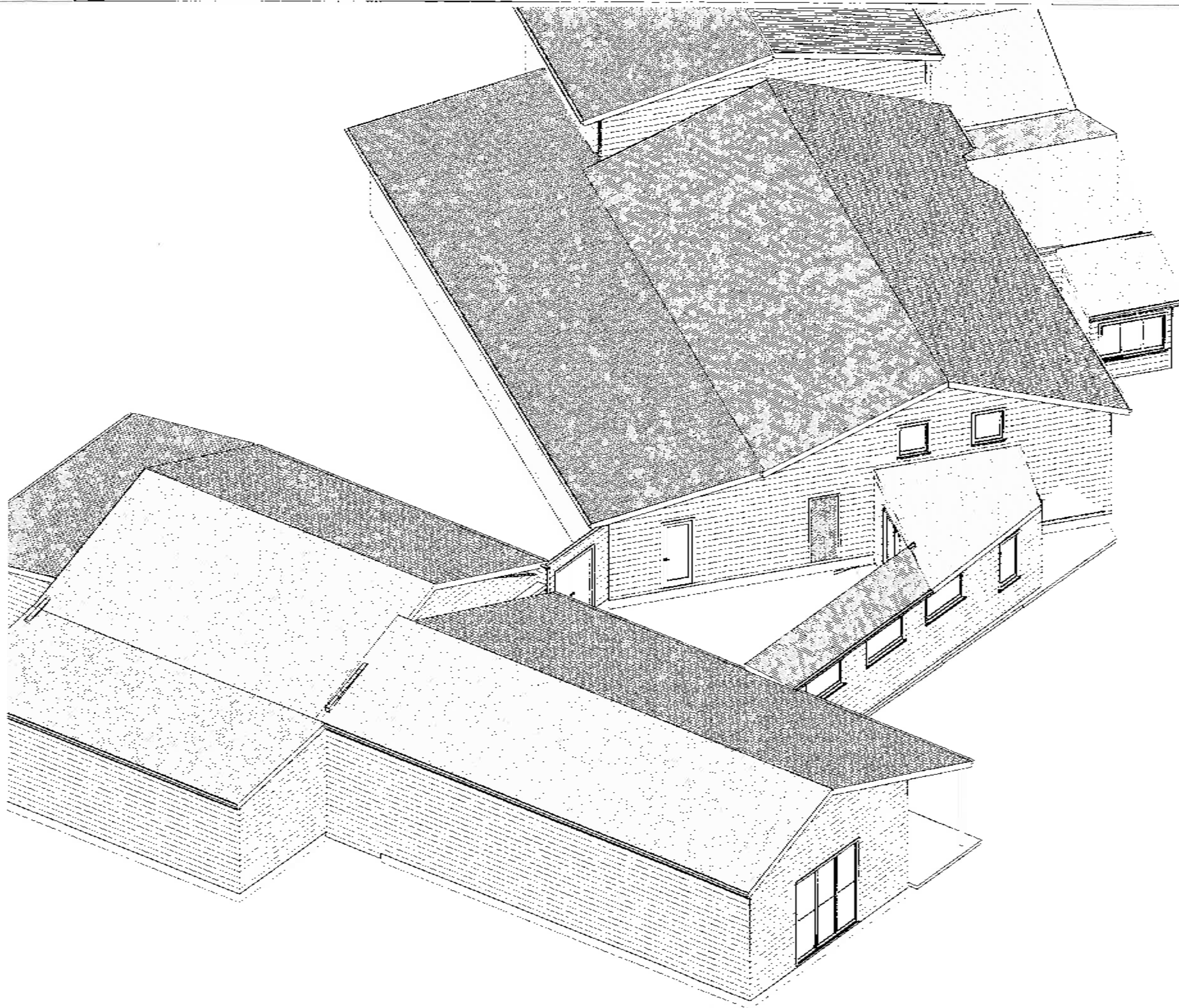
This includes all Plans and Specifications as required by SWDC.
Demolition and Site Works.
Materials and Labour.

Additional Costs As Follows.

PC Costs

Plumbing	\$1500.00
Electrical	\$ 800.00
Painting	\$3500.00
Building Consent	\$2500.00
Fire Report	\$2600.00

Regards
Jim Johnson



Job Name FELL MUSEUM
Job Details PROPOSED WALK WAY

Amendments:

Issue: Draft

Designed: Johnson Brothers

Drawn: J. Johnson

Date: 2/03/2016

Scale: 1 / 100
Sheet size: A3

Job # X

Sheet # 1
of 5



5 May 2016

Annual Plan Process
South Wairarapa District Council
PO Box 6
Martinborough

Please find attached a submission to the Annual Plan Process for the New Zealand Cycle Classic and Huri Huri; Wairarapa's Bike Festival.

We would like to talk to the submission please.

Yours sincerely

Jorge Sandoval
Race Director
New Zealand Cycle Classic
Festival

Catherine Rossiter-Stead
Event Organiser
Huri Huri; Wairarapa's Bike

Update 2/05/16

Submission to each of the Wairarapa District Council plans

New Zealand Cycle Classic Huri Huri – Wairarapa's Bike Festival 21-25 January 2017

2017 is the 30th anniversary of the New Zealand Cycle Classic. Thirty years of what is now New Zealand's only Union Cycliste Internationale (UCI) endorsed race.

Thirty years for any event is a significant milestone and it is in recent years that the event has considered stepping up from a UCI 2.2 event to a UCI 2.1. That's effectively equivalent to taking the event from Super Rugby to a Test Match. A presentation to the combined Councils on this plan was made at the Carterton Event Centre.

The step to UCI 2.1 (Test Match) was targeted for 2017 but it has now been set back a year to 2018. This is actually going to give the New Zealand Cycle Classic another year to fine tune routes, identify sponsors, coordinate logistics, improve media and community engagement.

Since the inaugural Huri Huri; Wairarapa's Bike Festival in 2015, the New Zealand Cycle Classic and Huri Huri have worked together to present international cycling and community engagement in a single event. In 2017 the collaboration will be seamless, starting with:

- Joint funding applications
- Combined brochure
- Combined website
- Joint branding

In 2016 the New Zealand Cycle Classic brought to the Wairarapa:

- 1,122 guest nights from the teams alone
- Average stay of 6.4 nights
- Very good domestic and international print, online and television media leverage for the Wairarapa

See appendix 1 for full list of measurable results

In 2017, the 30th Anniversary event will have additional interest for media and in turn we can expect considerably more visitors and community engagement.

Community engagement means:

- Cycle events for all levels of cyclist
- Cycle events for all ages of cyclist
- Opportunities for businesses to engage in the event
- Opportunities for the community to engage with professional athletes
- Opportunities for community groups to fund raise.
- Opportunity for cycling to be further demonstrated as the growth sector for health and tourism

Update 2/05/16

NEW in 2017

With the New Zealand Cycle Classic preparing for UCI 2.1 status in 2018, 2017 will introduce new stage routes that would be expected in a 2.1 event. These includes:

- Bringing in more spectacular scenery to enhance media story telling including:
 - Five Town Wairarapa Race
 - Lake Wairarapa
 - Castlepoint

Introducing more visitor markets to the event and opportunities to view:

- Campervan (self-contained) opportunities to get track side on multiple occasions
 - Encouraging the campervans to go to each district for the different stages
 - Encouraging campervans to activate parts of the districts

A Cycle Mechanics Village will be established where the community can come each evening to speak with mechanics, teams and riders. The cycling trade will have tents where their products can be exhibited and discussed. Community groups can use the village as a fund raiser by running food and beverage outlets to feed those engaging with the village.

During the month of January there will be a 'Geoteering' Treasure Hunt Challenge using the Wairarapa bike trails

Huri Huri will relieve funding pressure on Councils by totally combining with the New Zealand Cycle Classic. Council support will only be required for the single event.

What each Council will see from an investment in the event:

- all districts will have the presence of an international event coming right through the middle of their major towns
- attract participants and spectators for Huri Huri and the New Zealand Cycle Classic
- the local community engaged in cycling and outdoor activities
 - healthy, outdoor, family orientated activities
 - introduce youth to an international sport which New Zealand excels at
 - encourage cycling and cycle safety
 - encourage cycling as a transport method
 - develops sense of pride in hosting an international event
- highlight the region's rich cycling resources to community and visitors
- reinforce Wairarapa's position as a cycling destination
- promotes the region through extensive domestic and international media coverage

South Wairarapa

- Sprint Stage Finish in Greytown Main Street
- Community engagement in Greytown
- Tour passing through Featherston Main Street
- Community engagement in Featherston
- Tour riding on Rimutaka Cycle Trail
- Community event riding from Cross Creek to Featherston on the new trail
- Loop around Lake Wairarapa
- Two stage finishes in Martinborough
- Community engagement in Martinborough

Update 2/05/16

Carterton

- Sprint Stage Finish in Carterton Main Street
- Community engagement in Carterton
- Queen Stage (the hardest stage) finish on Admiral Hill
- Community event start in Carterton for race to Admiral Hill
- Spectator Zone at finish line on Admiral Hill
- Community mountain bike event

Masterton

- Stage finish at Castlepoint
- Community engagement at Castlepoint
- Two stage finishes in Masterton
- Community engagement in Masterton
- Two community cycle event starts in Masterton
- Cycling Legends dinner
- Cycling Mechanics Village

But Masterton gets all the team accommodation

It is true that the teams will all be staying at the Copthorne Solway Park Hotel & Resort, Masterton. Filled with international cycle racing teams, the Copthorne can't fit any more guests into the hotel over this Wellington Anniversary weekend and week leading up to it. This means any guests wanting to stay at the Copthorne will need to move deeper into the region. This presents an opportunity for all accommodation providers to maximise yield over this weekend given that the largest accommodation provider in the Wairarapa will be full.

Why would we support this event over other events

This event provides the districts, Wairarapa and New Zealand with a showcase opportunity. No other event takes in the whole region in the way this event does. No other event takes the Wairarapa onto the world stage in quite the way this event does. This event will not need funding in the long term once the transition to UCI 2.1 is complete.

But the organisers of Huri Huri and the New Zealand Cycle Classic get paid

It is true that the organisers of these events get paid. In fact there isn't a major event in the region where the organiser doesn't get paid. This is what it takes to put on a world class event. Councils can be assured that funding is only necessary until the event is established as a UCI 2.1 tour.

What we need from the combined Wairarapa Councils

For Huri Huri and the New Zealand Cycle Classic to grow, these events are asking for a combined contribution from the three District Councils of \$50,000.

\$50,000 would make a huge difference to finding the expected \$400,000 to fund the event.

Please consider the difference this event will make for the Wairarapa with your assistance until the event is established as a UCI 2.1 tour.

Update 2/05/16

Saturday 21 January 2017

Presentation of the teams a Huri Huri event

- media opportunities for TV, print, online to engage with teams, upcoming local riders, invited guests and local Kapa Haka

Sunday 22 January 2017

Carterton Main Street a Huri Huri event

- community engagement for Sprint Stage in Carterton Main Street
- community mountain bike ride

Greytown Main Street a Huri Huri event

- community engagement for Sprint Stage in Greytown Main Street

Family ride from Cross Creek to Featherston a Huri Huri event

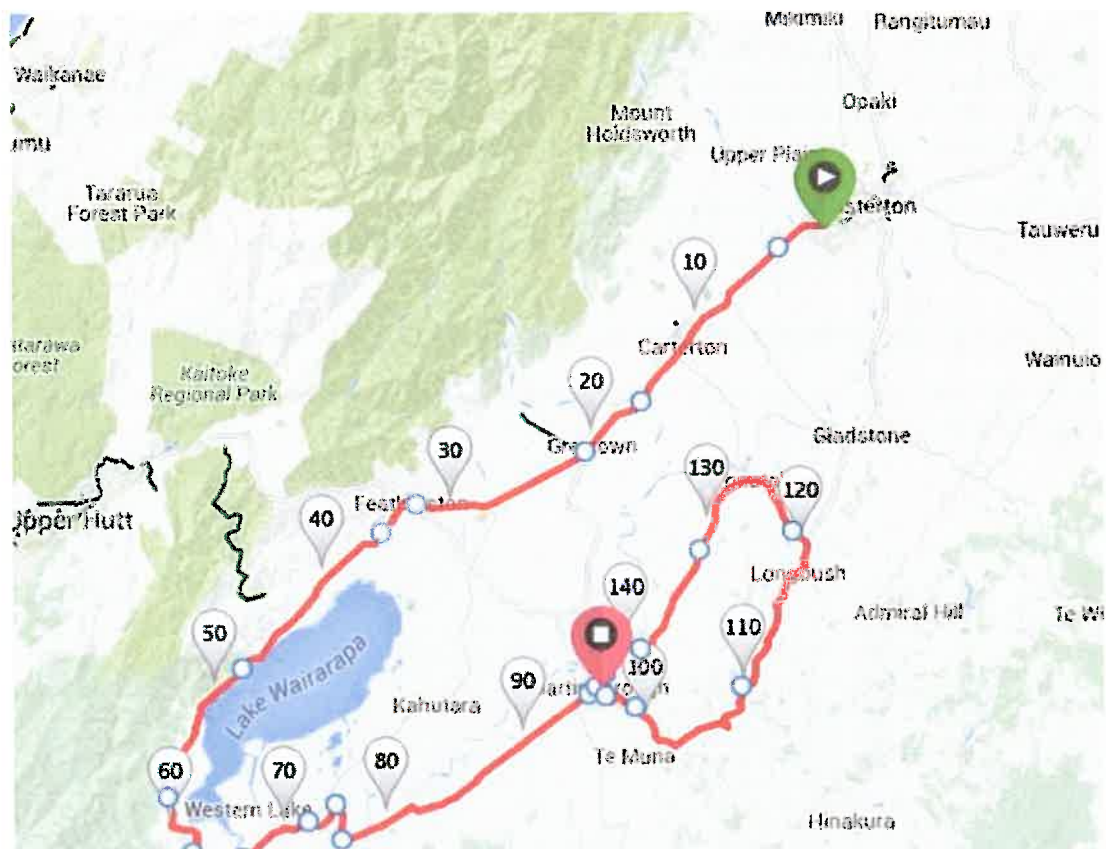
- arriving in time for riders entry to Featherston
- community engagement in Featherston Main Street

Martinborough Square a Huri Huri event

- community engagement for arrival and finish

New Zealand Cycle Classic

Stage One: **Wairarapa Five Towns Stage**
 Start time: 10.30am
 Finish time approximate: 1.30pm
 Distance: 143 km



Martinborough Square a Huri Huri event

- *community engagement in Martinborough Square*
- *business engagement throughout 9 laps of Martinborough Circuit*

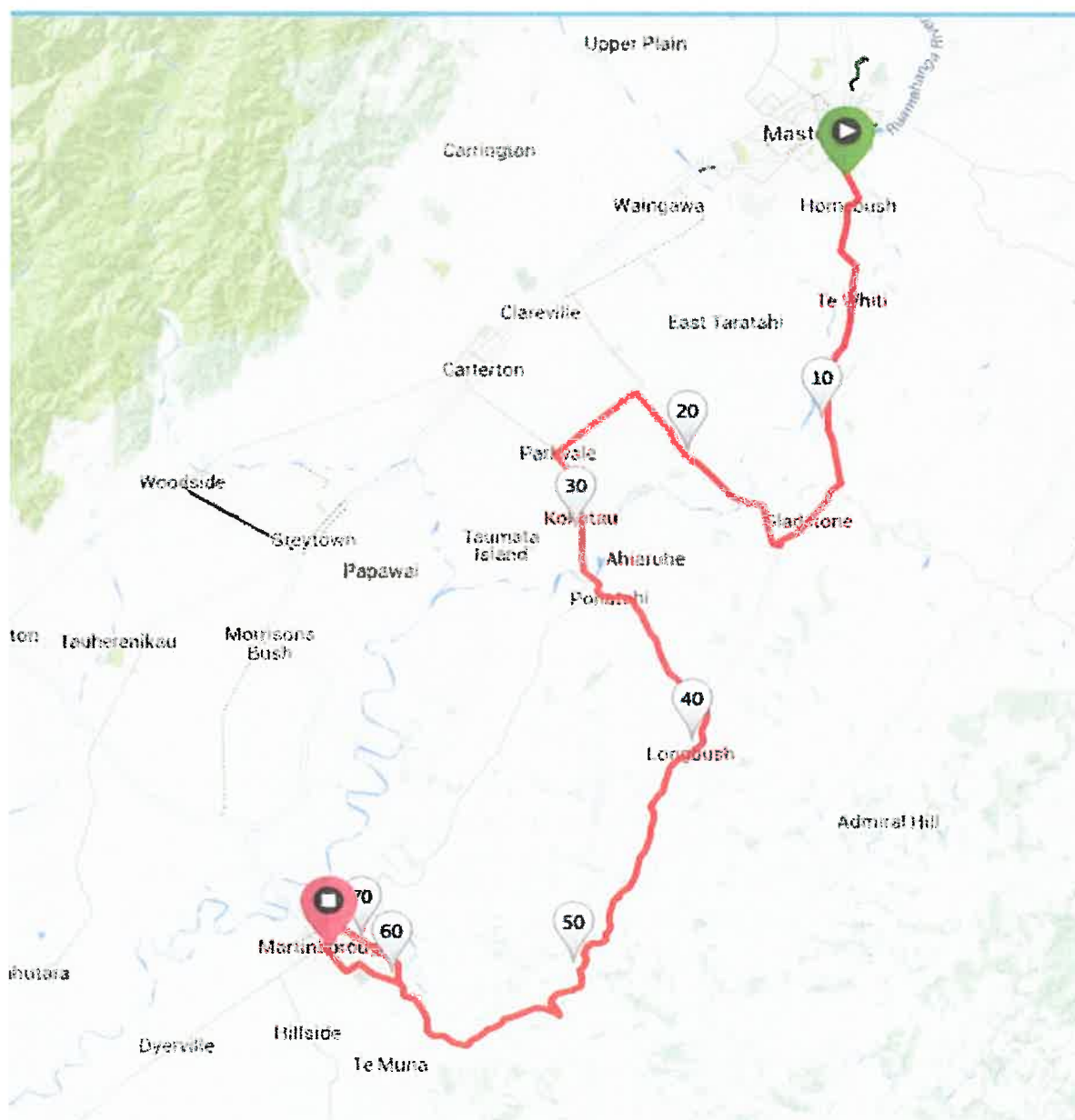
Stage Two: **Wairarapa Vineyard Stage**

Finish time approximate: 1.25pm

Distance: 136km

Route map Masterton to Martinborough

Route map Masterton to Martinborough including 9 laps of Martinborough circuit



Update 2/05/16



Tuesday 24 January 2017

Carterton to Admiral Hill a Huri Huri event

- regional cycle event for community
- Triple Crown time trials to top of Admiral Hill
- Admiral Hill spectator zone

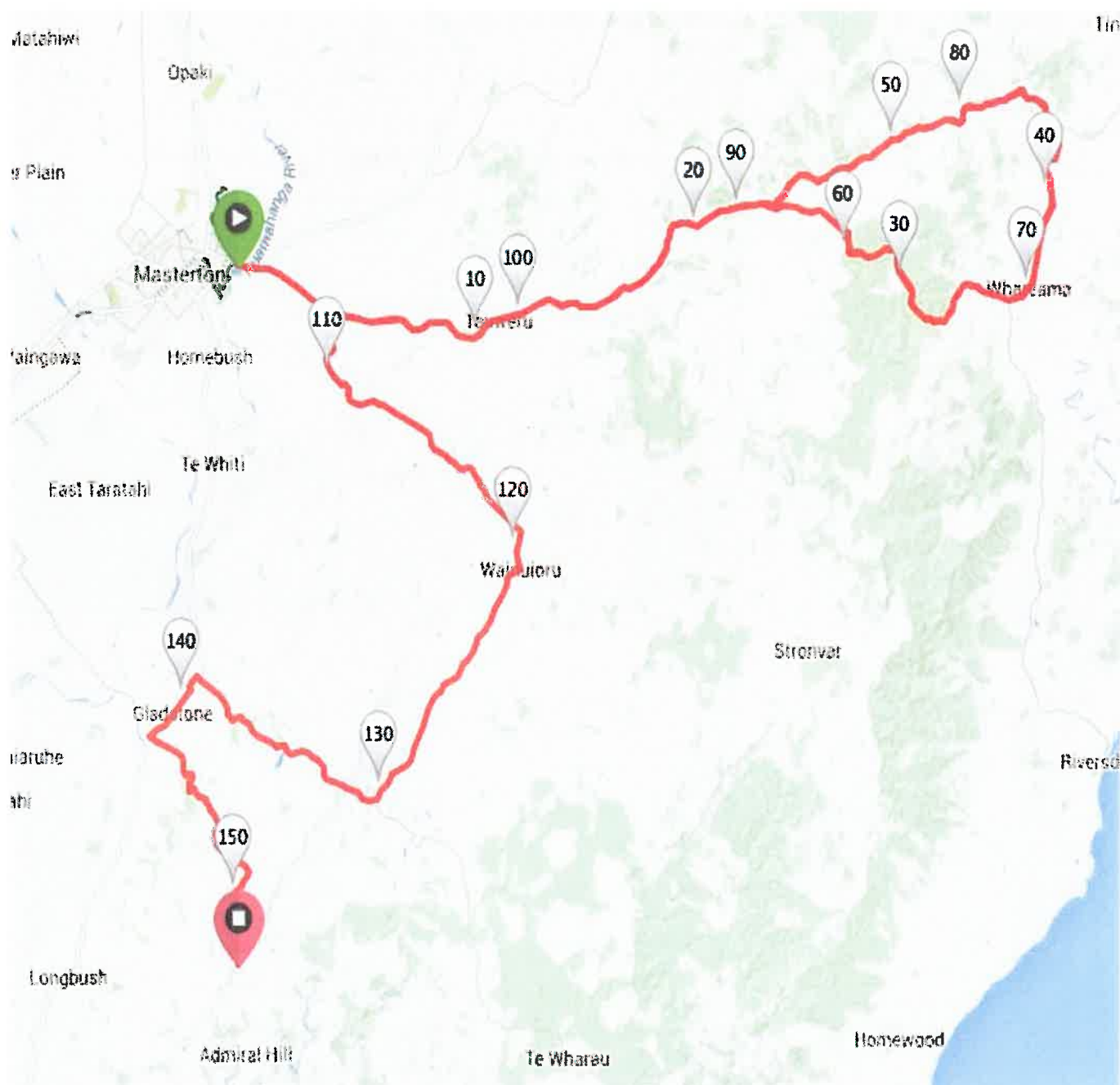
New Zealand Cycle Classic

Stage Three: Saturday 21 January 2017 – Admiral Hill Queen Stage

Start time: 10.00am

Finish time approximate: 2.10 - 2.25pm

Distance: 152km



Update 2/05/16

Wednesday 25 January 2017

Castlepoint a Huri Huri event

- community engagement at Castlepoint finish

Masterton a Huri Huri event

- community engagement at Masterton finish
- Triple Crown race from Masterton to Castlepoint
- regional cycle event for community
- Cycling Legends Dinner

New Zealand Cycle Classic

Stage Four: **Coastal Castlepoint Stage**

Start time: 10.00am

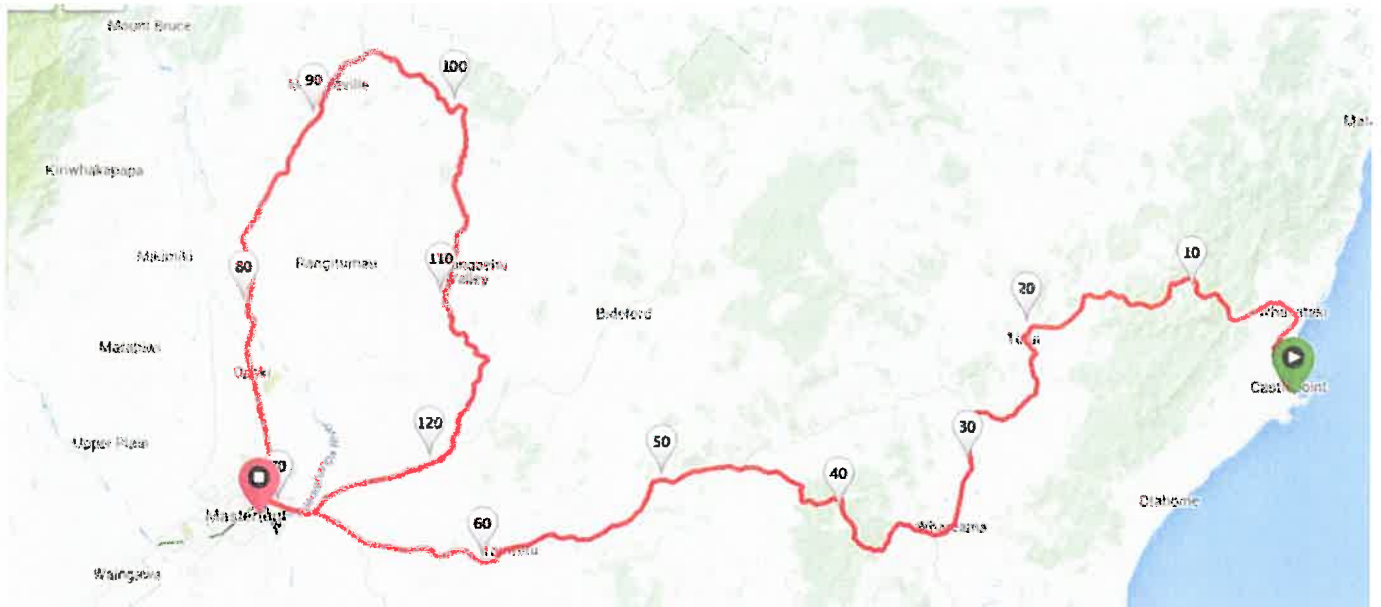
Finish time approximate: 11.30am

Distance: 62.5km

Riders will stay in Castlepoint for lunch before racing back to Masterton in the afternoon.



Stage Five: **Castlepoint - Masterton Stage**
Start time: 2.00pm
Finish time approximate: 5.00pm
Distance: 128km



Update 2/05/16

Thursday 26 January 2017

Masterton a Huri Huri event

- Triple Crown race of Mitre 10 Mega Circuit
- Mini Mitre 10 Criterium for kids
- community engagement throughout 10 laps of the circuit

New Zealand Cycle Classic

Stage Six: **Mitre 10 Mega Masterton Stage**

Start time: 10.00am

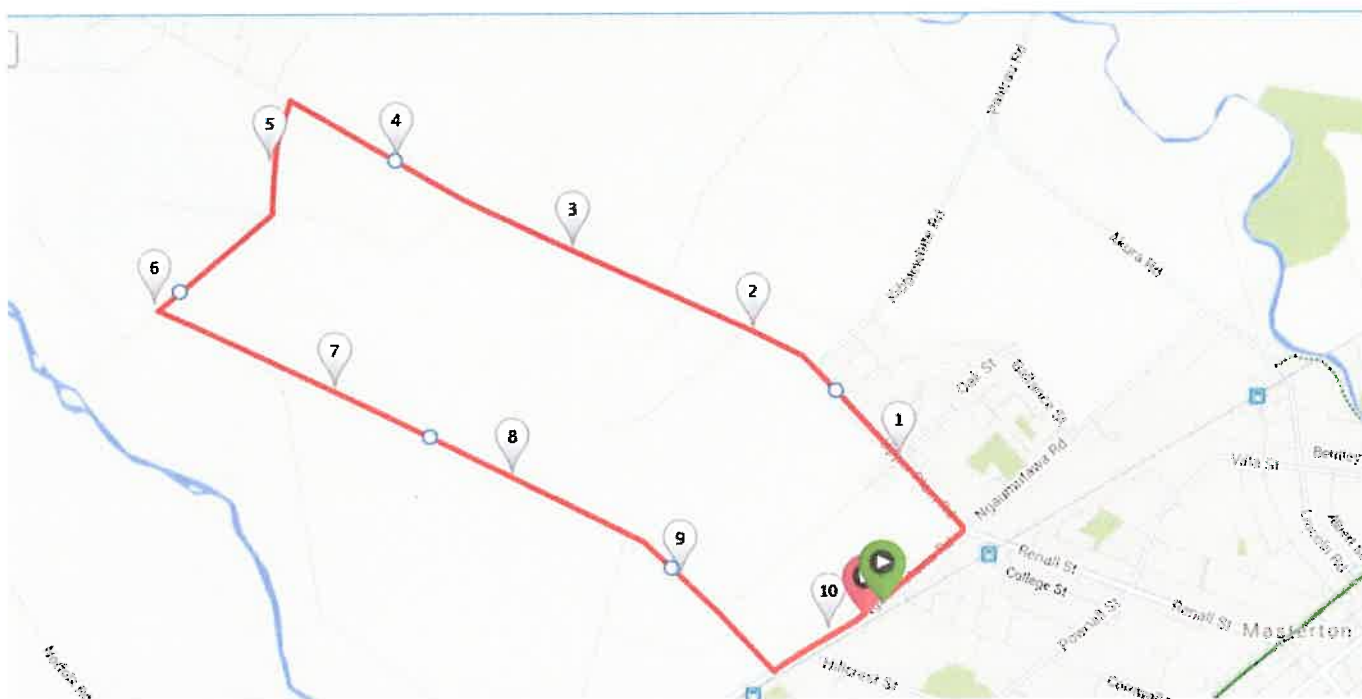
Finish time approximate: 12.45pm

Distance: 120 km

Start: Mitre 10 Mega, Masterton

Finish: Mitre 10 Mega, Masterton

Riders will complete 12 laps of a 10 km circuit

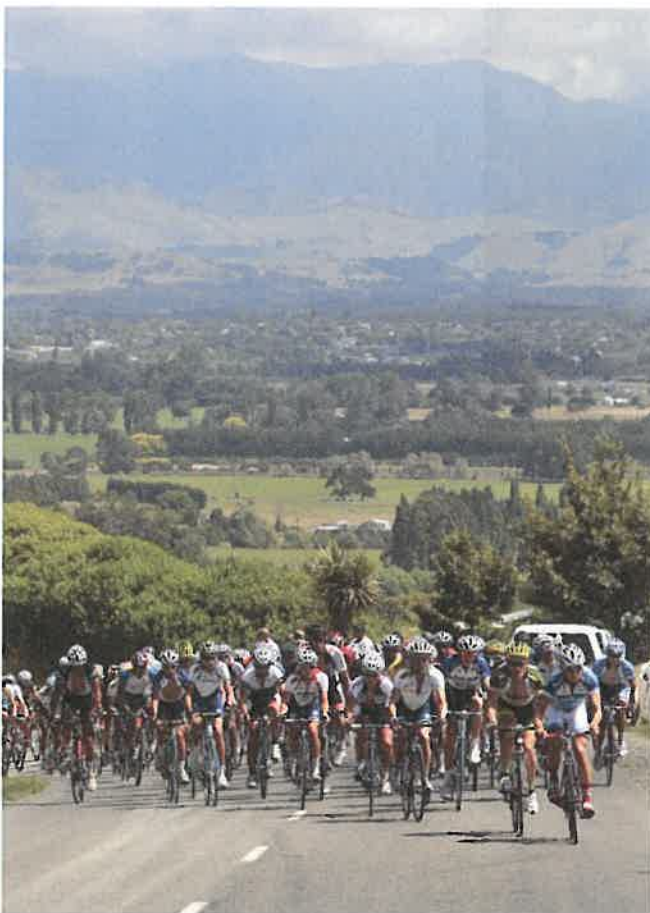


Update 2/05/16

Huri Huri and New Zealand Cycle Classic



Palmerston North family stayed for a week for the cycling



Spectacular scenery images used around the world

Update 2/05/16



An unknown rider



Picnic crowd waiting for the peloton



Media with King of the Mountain

Appendix 1

What the New Zealand Cycle Classic brought to the Wairarapa in 2016:

- 1,122 guest nights from the teams alone
 - 4% of our monthly guest expectation
- Average stay of 6.4 nights
 - Wairarapa average 2.2 for a January
- Anecdotal visitors
 - Man from UK comes each year to NZ to support the race
 - Family from Palmerston North came for a week to be involved
 - Mother from Taupo down for the week to watch her son race
- Media leverage for the Wairarapa is very good
 - SKY, SBS and UCI television channels
 - 1 hour summary of the tour
 - 18 times screened in NZ
 - Still on SBS Australia app for another year
 - European specialised UCI channels
 - TV3 New Zealand
 - Preview of the race aired the night before race began
 - Race reports on their website
 - Review of the event + angle on NZ team following event completion
 - Online
 - Stuff
 - Feature article on big week in the Wairarapa by Pamela McIntosh with mentions of both NZ Cycle Classic and Huri Huri.
 - Articles published in the Dom Post also linked onto STUFF and shared on any social media platform
 - sportshub.co.nz
 - Previews and all daily race reports were featured on this popular news sports website.
 - Preview race reports were picked up by international cycling websites, which have huge readerships
 - National and International print media
 - Dominion Post
 - Dec 14th 2015: Preview story angled on ONE Pro
 - Dec 16th 2015: Kenyan Riders Downunder story
 - Jan 11th 2016: Preview story on whole race
 - Jan 20th – 25th: Daily race reports and photos
 - Capital Day section: Good spots to watch NZ Cycle Classic and mention of Pashley Picnic for Huri Huri
 - New Zealand Herald and Times Age
 - Dec 15th: Preview story in general
 - Dec 21st: Kenyan Riders Downunder confirmation story
 - Jan 1st 2016: Preview story
 - Jan 20th: Race opening
 - Jan 26th: Race Report

- Wairarapa News
 - 2015: All media releases sent from Destination Wairarapa ran in this weekly newspaper previewing the event and announcing the teams
 - 2016: Discover the Wairarapa column: Jorge Sandoval
 - 2016: Preview story
 - 2016: Review race report
 - 2016: Successful event news article
- Cycling Publications
 - New Zealand Road Cyclist
 - (Jan issue) Preview article and destination piece on visiting the Wairarapa
 - (March issue) Post event article angled on NZ team
 - MAILLOT JAUNE MEDIA (Magazines: NZ Bike | NZ Triathlon & Multisport and websites: www.nztri.co.nz | www.femmefitness.co.nz | www.endurancesport.co.nz | www.yellowjersey.co.nz)
 - Feature article review of the NZ Cycle Classic and side bar story on Huri Huri + images
- Other Publications
 - Kia Ora Magazine (Air NZ inflight magazine)
 - Events section of the magazine with Huri Huri
 - The Motor Caravanner
 - Dec/January Issue: Huri Huri and NZ Cycle Classic Events Listing
 - Wairarapa Lifestyle Magazine
 - Summer issue 2015/6): Cycling feature article with mentions to both NZ Cycle Classic and Huri Huri. Also organised for cover shot to feature Pashley Bikes.
- Social Media
 - Team coverage had an international presence in particular are all very social media savvy. Teams like ONE Pro, Kenyan Riders Down Under Oliver's Real Foods, Avanti Isowhey, Data#3, State of Matter, JLT Condor, Seasucker, Skoda Racing and Cobra9 all posted on Facebook & Twitter during race week and the days that followed. Many of their shares and likes were from international followers
 - Rider and Team blogs
 - Google search brings up 6 pages of results before it starts to become sporadic
- Radio
 - One hour summary in Australia with Oliver's Real Food Racing
 - Radio Sport
 - Preview media releases and daily race reports mentioned on their news items as well as featured on their website
 - More FM
 - 2015: All media releases previewing event sent from Destination Wairarapa were read out on air.
 - 2016: All race reports and race review media releases from Destination Wairarapa were read out on air
 - Radio New Zealand
- Final race report and overall race review on Jan 24th



Pure Tour NZ

Presentation to the Wairarapa Combined Councils Forum

7 March 2016

PURPOSE OF PRESENTATION

1. To provide a proposal for an elevated, elite international road cycling event called the Pure Tour New Zealand
2. To explore whether Wairarapa Councils would be interested to support and invest in the event for strategic outcomes (obviously conditional on other elements/investors in the event also being secured).

SUMMARY

Event name	PURE TOUR NZ		
Event Type	Annual Elite UCI 2.1 International Road Cycling Tour from 2017 – 2021 (5 years) featuring Tour de France riders and strong community engagement benefits including Wairarapa's Huri Huri Bike Festival and Grand Fondo		
Promoter	Sandoval Promotions Limited	Event location	Wairarapa and Wellington (possibility of Hawkes Bay)
Investment sought	Indicatively 150K per year (cash or budget reducing VIK) from the combined Wairarapa Councils	Event date	January each year
Other investors	To be feasible, investment will also be required from NZ Major Events (NZ Government), a major city and gaming/charitable trusts plus sponsorship.	Total event budget	\$1.412 million rising to \$1.5 million per year



1. EVENT SUMMARY

The New Zealand Cycle Classic is an annual road race currently held in January in the Wellington and Wairarapa over 5 days. It is the only Union Cyclist International (UCI) 2.2¹ event in Oceania and attracts approximately 55 domestic and 35 international participants. It operates off a total budget of approximately \$250,000.

Sandoval Promotions Limited is assessing support to elevate the event to a 2.1² UCI race called the Pure Tour New Zealand for the 2017 season and beyond. The event will include a six-day road race covering the Wairarapa and Wellington regions and it is anticipated that the 2017 event will attract 14 teams of 7 riders and 3 officials per team (approximately 140 international participants) – many world class, Tour de France riders.

This initiative is supported by Cycling NZ and Sport NZ.

The change in level will generate significantly increased world-wide media interest and community engagement. It is proposed to produce live coverage of the first and last days of the event and a primetime highlights package of stages 1 to 4, for broadcast into Australia, USA, and Asian and European markets. Note that the television product will be owned by the event and can be tailored for a range of purposes.

In addition to the 2.1 elevation, the applicant would like to align more closely with the Wairarapa's Bike Festival, Huri Huri and add a "Gran Fondo" (Big Ride) to the event to encourage and attract domestic recreational cyclists of all ages, anticipating 600-700 participants (domestic).

An initial discussion was held with Wairarapa Mayors in late 2015. A detailed proposal providing greater detail about the Pure Tour NZ concept, routes and other delivery matters, is available in support of this paper.

2. EVENT DETAILS

The event will be held in the diverse landscape of the Wairarapa and city landscape of Wellington. Jorge Sandoval has a strong background as a cycling event promoter and race director, and has well-established relationships with local authorities, charitable trusts and potential commercial partners.

The differences between the 2.2 existing event and the 2.1 proposed events are summarised below.

Race Level	Participants / Riders			International Officials	Length of Stay	Out of Region Spectators	International Spectators	TV Potential
	Total	Domestic	International					
2.2	108	73	35	0	6 days	200	0	Highlights documentary
2.1	150	10	140	5	12 days	1000+	100	Global live coverage for part of race, daily clips. Highlights documentary

The timing of the event will be either the week before or after the South Australian 'Tour Down Under' UCI World Tour race³, held annually in late January, to attract teams that are already coming to the region. The 2.1 event will attract teams competing in top races like the Tour de France and may include some high-profile riders.

The UCI's agreement to elevate the existing 2.2 event to level 2.1 will be sought for the 2017 event if the necessary NZ Government and region/city investment is confirmed by 30 June 2016. The UCI's application process requires the applicant to demonstrate its capability to host the higher level event and Jorge is confident in being granted the 2.1 status by the UCI if application can be made by July 2016.

¹ A 2.2 race is a stage race over multiple days where UCI professional continental teams of the country, UCI continental teams, National teams and regional and club teams can compete.

² A 2.1 race is a stage race over multiple days where 50 per cent of teams can be UCI professional teams and no regional or club teams can compete.

³ The 'Tour Down Under' is one of 17 multi-day stage races on the UCI World Tour (UWT). It is compulsory for the 18 professional teams selected by the UCI to compete in all UCI World Tour events.

3. BUDGET ANALYSIS (First 3 years)

Estimated Revenue	2017 \$	2018 \$	2019 \$
Operating capital	0	87,500	87,500
Commercial sponsors – cash and budget relieving VIK (unconfirmed)	150,000	202,500	342,500
MEDF Investment sought (unconfirmed)	700,000	600,000	500,000
Charitable Trusts (unconfirmed)	250,000	250,000	250,000
Wairarapa Councils - Masterton, Carterton and South Wairarapa District Councils (unconfirmed)	150,000	140,000	130,000
Wellington City/WREDA (unconfirmed)	250,000	250,000	250,000
Total Estimated Revenue	1,500,000	1,530,000	1,560,000
Estimated Expenditure			
Pre-event expenses	20,000	20,000	20,000
Production Costs	128,000	128,000	128,000
Compliance Costs (UCI fee \$7,000, drug testing, permits)	44,000	44,000	44,000
Prizes	90,000	90,000	90,000
Competitor Hosting Expenses (accommodation, appearance fee \$50,000, car rental, airfares)	488,000	488,000	488,000
Marketing and Promotion (TV budget, media, marketing, printing etc)	349,000	379,000	409,000
Volunteers (servicing and uniforms)	22,000	22,000	22,000
Salaries (\$210,000) and Donations (St Johns and Motorcycle club)	218,500	218,500	218,500
Functions and Ceremonies	23,000	23,000	23,000
Miscellaneous (Contingency two per cent)	30,000	30,000	30,000
Total Estimated Operating Expenditure	1,412,500.00	1,442,500.00	1,472,500.00
Estimated Profit (carried forward as operating revenue)	87,500	87,500	87,500

The significant increase in the marketing and promotion budget will allow i) the promotional and fan driving power of event to rise dramatically and ii) improved leverage of the Wairarapa region and support of Huri Huri. In the current NZ Cycle Tour, this budget is just 15K for television and 5K for marketing.

Increased stakeholder engagement will improve collaborative design and shaping of the event (within reason) and greatly improved benefits to the host regions..

A realistic budget for staff salaries is provided thus ensuring that community engagement and leverage and legacy activities are properly resourced and delivered to a high specification – an essential ingredient for NZ Government and regional investment.

4. STRATEGIC ALIGNMENT

The Pure Tour plan/budgets for i) event marketing and promotion and ii) leverage and legacy will be developed to focus on the areas below. Working groups drawn from the stakeholders will be used to identify opportunities that can be delivered within these plans and these will be contractually committed to.

Entity	Strategic alignment with event
Destination Wairarapa	<ul style="list-style-type: none"> • More visitors, staying longer, spending more • Key project to ensure maximisation of regional benefit from NZ Cycle Trails (including Wairarapa as national centre for on-road cycling) • Grow online presence (many options around the event) • Winning conferences (possible to target cycling or UCI conventions such as the Asia-Pacific Cycle Congress) • Developing strong working relationship with Tourism NZ (will be a lead agency if NZ Govt comes on board) • Product Development (Huri Huri, Grand Fondo and promotion of social cycling and family friendly cycling holidays)
Masterton DC (LTP 2015 - 2025)	<ul style="list-style-type: none"> • A great place to live, visit and do business • A strong, resilient economy (supporting Destination Wairarapa and encouraging events) • An active, involved and caring community (encouraging people to be active) • An easy place to move around (promoting safe alternatives to cars incl cycle lanes)
Carterton DC (LTP 2015 – 2025)	<ul style="list-style-type: none"> • A welcoming and vibrant community where people enjoy living • A healthy district (providing facilities for recreation and an Events Centre where the community can design and deliver their recreation programmes) • A district that enjoys creativity and recreation (as above) • Supports the Wairarapa Tourism Strategy • Walk Cycle Carterton 2011 – if still relevant
South Wairarapa DC (LTP 2015 – 2025)	<ul style="list-style-type: none"> • To work with and for the South Wairarapa communities to affect the best possible social and economic outcomes which are based on valuing and respecting the people, the land and the resources • Continued involvement with Destination Wairarapa • Promote cycle tourism • Construct a cycle trail from Cross Creek to Featherston (complete) • Develop and implement a cycle strategy
Huri Huri	<ul style="list-style-type: none"> • Engage the local community in cycling activities • Highlight the region's rich cycling resources to both the local community and visitors • Help the region to establish itself as the cycling destination • Draw spectators to watch the New Zealand Cycle Classic <p><i>Ethos:</i></p> <ul style="list-style-type: none"> • Involve the entire community • Get the community active • Encourage the community to spend time outdoors • Initiate change by encouraging the community to use a bike to get about (#GetOnYourBike) • Provide a unique cycling opportunity for Wairarapa visitors • Have fun!

5. LEVERAGE AND LEGACY

Should this event receive support from the NZ Government, a contractual requirement will be to develop and implement a Leverage and Legacy Plan to maximise national and regional economic and social/sporting outcomes as part of the event. This work would be co-ordinated and led by Sport NZ/Tourism NZ and would be an integrated, strategically aligned plan developed in consultation with all key stakeholders.

The plan would identify the specific projects, the strategic outcomes/KPI's sought and the people and financial resourcing for these projects (from in the event budget and baselines of agencies/councils).

The Leverage and Legacy Plan is regarded as equal in importance to the Operational Plans associated with the event delivery as it delivers much of the value sought by certain stakeholders investing in the event.

Examples of leverage and legacy initiatives might include (but are not limited to):

- Maximising media and promotion of the region's cycle-related assets, attributes and brand as *the cycle destination*
- Overlaying and development of cycling related opportunities for community engagement (Huri Huri has identified many opportunities, Grand Fondo etc)
- Promotion of cycling as a sustainable and healthy transport option
- Programme to boost out of region and international visitation over the five years
- Youth or schools term-long cycling programme supported by high profile cycling ambassadors and police
- Designing the event route and start/finish locations to showcase key assets

6. OTHER COMMENTS

Timeline

- The application for NZ Major Events funding has been submitted and will be decided in March/April 2016. Sport NZ is supporting this application but it should be noted that the direct national (as opposed to regional) economic benefit is at question and strong support from Tourism NZ is likely to be critical here.
- Approaches to Wellington/WREDA are underway.
- If sufficient interest from critical partners is forthcoming,
 - approaches to UCI (with Cycling NZ) to confirm the date and 2.1 sanction could occur in April 2016
 - a detailed Leverage and Legacy strategy would be developed by May 2016
 - contracts should be finalised by June 2016.

Next steps

- Council's to collectively confirm interest in proceeding and any related conditions
- If interested, a Wairarapa working group should be initialised to work with Jorge and Sport NZ to start shaping the organisation frameworks, plan preferences and details and contract terms. This could include representatives/officials from each Council, Destination Wairarapa, Sport Wairarapa/Wellington, Huri Huri, Sport NZ etc.

THANK YOU

April 2016

Wellington Free Ambulance Request for an Increase in Funding from South Wairarapa District Council

As you are aware your Council recently gave us a grant/contribution to Wellington Free Ambulance for \$4,762.50 which equates to just over \$.49c per person. We are very grateful for your contribution to helping keep Wellington Free Ambulance free and helping us with our annual \$4 million shortfall. This year we are asking for \$7,146 which equates to \$.75c per person.

I have discussed with you our wish to increase the contributions of the council to \$1 per person over the next 2-3 years. I am writing now, to ask what we need to do to get your support for this – what information you need and how we can help by talking with your council or other stakeholders

The Cost of Helping People in Your Community

- From 1 April 2015 to 31 March 2016 we answered 1,468 calls for help from people in your community;
- The operational costs of delivering the ambulance service in the Greater Wellington and Wairarapa are \$25 million per annum of which government funding only covers approximately 70% of those costs.
- A significant contribution to our operating costs is the employment of 22 local paramedics in the Wairarapa region.
- Each emergency ambulance has to be replaced every three and a half years at a cost of \$240,000 for a fully equipped ambulance.
- We believe that \$.75c per person in your region is a reasonable amount for your council to support Wellington Free Ambulance, with a view to moving to \$1 per person next year.

Helping Your Community

- As well as saving people's lives in emergencies, we care for the most vulnerable and socially excluded members of your community:
 - Elderly with chronic and complex health needs;
 - Socially and economically disadvantaged people who cannot afford to access healthcare.
- Your voters enjoy the only free-to-the-patient emergency ambulance service in New Zealand:
 - Elsewhere in the country they would have to pay between \$80 and \$160 to call an ambulance;
- To keep this service free to people in our region, Wellington Free has to raise over \$4 million a year:
 - Local people support us very generously. It is a good idea that South Wairarapa District Council is seen to support us too to demonstrate that they are in step with their public;
- Our patient satisfactory survey shows that 96% of patients are satisfied with our service.
- Each year the demand and expectation on our service is growing.
- This increase in demand is predominantly being driven by the elderly and the socially & economically disadvantaged.



About Us

Since 1927 Wellington Free Ambulance has provided the only free-to-the-patient ambulance service in New Zealand. We never, ever charge our patients.

Unless we raise over \$4 million across our entire region (\$500,000 in the Wairarapa) we will not be able to continue to provide the service your people expect.



Paul Crimp
Chief Executive
South Wairarapa District Council
PO Box 6
Martinborough 5741

TRUST HOUSE HOCKEY WAIRARAPA COMPLEX, CHESTER ROAD, CLAREVILLE.

HOCKEY WAIRARAPA, PO BOX 712 MASTERTON.

06 3798133, email waihockey@xtra.co.nz

www.hockeywairarapa.org.nz

28th April 2016

Dear Paul,

Annual Plan Submission

I am writing on behalf of Hockey Wairarapa to make a submission to Council for this year's Annual Plan Process.

Hockey Wairarapa have recently been in discussion with New Zealand Hockey about the possibility of hosting a Test Series in the Wairarapa later on this year. The series will involve the Black Sticks Men's Team who will play two games at the Trust House Hockey Wairarapa Complex in October / November – date to be confirmed. Their opposition are still being finalised but any new information will be passed to Council as soon as it is confirmed.

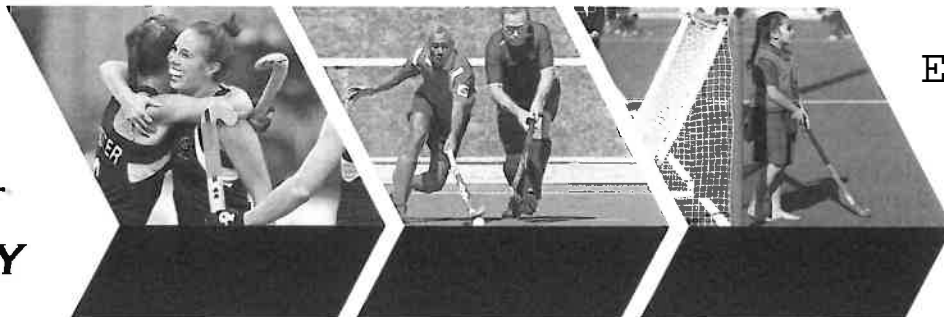
We feel that to host such an event would be yet another tremendous coup for the region and we would relish the opportunity to bring this level of sport to the Wairarapa once again. We were fortunate enough to have been given this chance once before in 2014 and to say that it was a massive success for the region was an understatement. The support of Council, Trust House, local businesses and the media helped make the weekend unforgettable!

Having presented Council with this brief outline of the proposed event we would like to ask that the sum of \$4000 be considered to be set aside in order to help ensure that the Wairarapa secures the hosting rights.

Please do not hesitate to contact me for further information.

Yours Faithfully,

Kelly Govan
Executive Officer – Hockey Wairarapa



E

27th April 2016
 CEO Paul Crimp / Mayor Adrienne Staples
 South Wairarapa District Council
 PO Box 6
 Martinborough 5741

Dear Paul and Adrienne,

**Re: Hockey New Zealand Partnership with South Wairarapa District Council
 Proposed Black Sticks Test Series October / November 2016**

We greatly appreciate the opportunity to put forward a proposal to bring International Test Hockey back to the Wairarapa District after the success of the Black Sticks Women's test series v USA in 2014. In October 2016 we are looking forward to bringing the Black Sticks Men's team to the region following on from their Olympic Campaign.

Please read below the short background document outlining the opportunity for all.

Background

Hockey New Zealand is the national sporting organisation for hockey in New Zealand. It is through events and competitions that our participants experience hockey – as a player, umpire, official, spectator and broadcaster.

Hockey New Zealand delivers between 15 -30 test matches per annum. In addition, we administer 36 national domestic tournaments per annum, ranging in size from our National Masters Hockey Tournament which usually reaches between 900 – 1,000 participants to our smallest tournament which is a 16 team (400 participants) tournament.

Hockey New Zealand is committed to taking our tournaments and events around the country. To this extent, we have delivered in the following regions since 2011:

- Hawke's Bay 2012 Women's Test Series, 2014 6 Nations and 2015 8 Nations
- Palmerston North 2012 and 2014 Women's Test Series
- Wellington 2012 and 2014 Women's Test Series
- Auckland 2012 Women's 4 Nations and 2016 Men's Test Series
- North Harbour 2012 Women's 4 Nations
- Whangarei 2013 Women's 4 Nations and 2015 Women's Test Series
- Hamilton 2013 Women's 4 Nations, 2016 Men's Test Series
- Tauranga 2013 Women's 4 Nations and 2014 Men's Test Series, 2016 Men's Test Series
- Counties 2013 Men's Test Series
- Stratford 2013 Oceania Cup, 2014 Women's Test Series and 2015 Oceania Cup
- Nelson 2014 Men's Test Series, 2015 Men's and Women's Test Series
- Blenheim 2015 Women's Test Series
- Taupo 2014 Women's Test Series
- Christchurch 2014 Men's Test Series, 2015 Men's and Women's Test Series
- Kapiti Coast 2014 Men's Test Series
- Gisborne 2015 Women's Test Series

Partnership Approach – Hockey New Zealand, Hockey Wairarapa and South Wairarapa District Council

Hockey New Zealand would like to again enter into a partnership with SWDC to bring two international test matches to your region in October 2016. We are also approaching Carterton and South Wairarapa District Councils to work in partnership as we did with the 2014 series.

Event Overview - October 2016 Test Series – New Zealand Black Stick Men vs Opponent TBC

This is a six test series (two tests in Wairarapa, two tests in Palmerston North and two tests in Stratford) for the men, which will be their first home test matches following their 2016 Olympic campaign. The series will also be preparation for the inaugural Trans-Tasman Men's and Women's series in November.

- Dates and Schedule – mid-late October (TBC)
- Team Opponent – TBC (most likely to be Japan – world ranking 16th)
- Event Format – 2 Test Matches spread over 2 days of play over 2-3 days
- Venue – Trust House Hockey Wairarapa Complex, Clareville
- Training requirements – 2 turfs – 2 x 1.5 hour slots per day
- Spectator stadium capacity – up to 2,000 spectators
- Total Cost of the series (3 venues): \$165,000
- HNZ Contribution: \$45,000 and Funder contributions: \$120,000

Benefits to the local community:

- World class hockey held locally, with opportunities for schools and community to engage with players
- Legacy and leverage for local community – including coaching, umpiring, venue infrastructure
- Increased profile and media coverage/presence
- Economic impact/return from visitors



Non quantative benefits to the local community

- Breaks 'provincial' mould
- Showcases district – national, stage/media
- Influences perceptions positively
- Demonstrates Wairarapa's calibre to deliver
- Wairarapa benefits – pride, vibrancy, social, feel good factor
- Brand position and perception
- District promotion
- National and International connections
- Community confidence and pride

Contribution from the Wairarapa Community

- Leverage and legacy opportunity for the sport
 - Advanced Coaching Course- to be held during the Test Series (TBC)
 - Umpiring Course
 - Infrastructure upgrade (electronic scoreboard in 2014)
- Partnership support
 - Local Council
 - Regional Sport Trust
 - Local marketing delivery arm (this could be from council)
 - Local media partnership
 - Reduced accommodation costs
 - Temporary infrastructure upgrade and support
- Attendance figures
 - Level of comfort around cost delivery model
 - Secure strong attendance figures (greater than 1,000 pax)
- Financial Contribution
 - Amount requested from Masterton D.C: \$4,000 (same level of funding as 2014)
 - Amount requested from Carterton D.C: \$4,000
 - Amount requested from South Wairarapa D.C: \$4,000

Please don't hesitate to contact us if you require any more information.

Kind Regards

James Sutherland
Funding Manager
Hockey New Zealand
james.sutherland@hockeynz.co.nz

Richard Palmer
Events Manager
Hockey New Zealand
richard.palmer@hockeynz.co.nz

Kelly Govan
Executive Officer
Wairarapa Hockey
waihockey@xtra.co.nz

Submitted on Monday, 2 May 2016 - 8:44pm Submitted by anonymous user: [222.153.234.126]
Submitted values are:

--Submitter Details--

Name: Luther Toloa

Organisation: Bring it to Colombo Trust

--Submission Hearings--

Do you want to speak to your submission? Yes

Speaking preference: May 25th pm

--Sewerage--

How would you like to see the sewerage upgrade funded:

--Roading--

Are there any streets or roads in the district you think the speed limit should be reviewed?

--Water Supply--

If water supply revenue is in excess should we:

--Cycle Strategy--

Do you support the draft Cycle Strategy?

If not what changes would you like to see?

--Which aspects of the Cycle Strategy are most important to you?--

Please rank from 1-5 with 1 being the most important:

- Urban cycling (safety and marking routes):

- Urban amenity (cycling parks, racks and support):

- Development of linkages (routes between destinations e.g.

Featherston to Martinborough/Greytown):

- Traffic safety (as most cycling is on road a concentration of safer roads for cycling):

- Tourism and development (cycle races and events and tourism trails e.g. vineyards):

Are there any other cycle ways or physical works you would like to see considered in the cycle strategy future works plan?

--Pensioner (Community) Housing--

How would you like to see SWDC pensioner housing managed in the future?

--Fees and Charges--

Do you support the draft fees and charges?
If not, why?

--Additional Comment--

If you would like to comment or propose something different now is your chance: The Trust seeks financial support from the South Wairarapa District Council to assist with the rebuild of the regional netball facility, Colombo Road, managed by Netball Wairarapa Inc. Further material will be provided at the submission hearing.

Upload submission:

Upload additional information:

The results of this submission may be viewed at:

<http://www.swdc.govt.nz/node/736/submission/577>

Hello,

I'd like to request that the Brandon Street, from Moore Street to hard Street, in Featherston be widened to the same width as the rest of Brandon Street.

The reason for this request is that the road is currently very narrow, with no kerbs, no markings, open drains on both sides, and limited lighting along this stretch.

Widening the road would make it easier for two vehicles to pass on this stretch and also remove the blind corner at Hart Street, where several vehicles has ended up in one of the open drains to avail collisions with cars coming the other way.

I hope this submission request includes all the required information, but if you need anything else, please let me know.

Kind Regards,

Nim

Hello,

I'd like to request a footpath be created along Brandon Street between Moore Street and Hart Street - along the Dorset Square side of the road.

The reason for this request is that there is currently no footpaths on this stretch of road. There are open drains on both sides of the road that lead up to a blind corner onto Hart Street. This is very dangerous.

When it rains, both sides of the road are virtually impassable due to the mud and water that accumulates there.

The side of the road that borders Dorset Square has a significant mown verge that would easily accommodate a footpath. As it's not in front of any houses for the most part it would cause limited disturbance for home owners and make getting to and from the reserve walks that much easier to navigate.

There are a lot of kids in the area who would be made that much safer by having this footpath in place.

The area is straight and flat so hopefully easy enough to get something built there.

Thanks,

Nim

Hello,

I'd like to submit the idea of having an additional zebra crossing at the start of town [Wellington side].

The reason for this is that there is nowhere to safely cross over SH2, and even if you, you still have to navigate the five road crossing of Wakefield, Bethune, Revans, Fitzherbert streets.

It would make sense to have one crossing between Bethune and the turn off to SH53, but it may have to involve closing up the random car bay outside the Royal Hotel.

This would allow people to cross safely and allow traffic to still flow freely. It's a very open and clean straight stretch of road, so makes sense.

The other two crossings in Featherston are at the far end of town and this would allow pedestrians to cross safely at a point this side of the railway line.

Thanks for reviewing my submission.

Regards,

Nim

Hello,

I would like to make a submission to the Annual Plan that would allow the track of parkland that runs along the back of Hart Street, Featherston to be maintained so that the walking community can use it to access the reserve that it's linked to.

At present it's been intentionally blocked off by the neighbouring property owners and is being used as private land.

Reviewing the land title it's council land.

Reviewing the GW survey maps, it's designated as council land.

Reviewing the GW survey maps, it's designated Park land.

Reviewing the GW survey maps, it's within the town boundary.

As the council is not gifting land these days, it needs to be open to the public and appropriate walking signs and maps put up so that it can be enjoyed by everyone.

We have a number of lovely walks around Featherston and it's a shame that this one is being restricted on purpose from public use - by private individuals who have no right to do so.

I hope this get resolved as part of the Annual Plan's remit to make public spaces easy to access and safe to traverse by members of the public.

Kind Regards,
Nim

Hi Kim,

Thanks for the update, that's really great news.

It's such a lovely trail, well from my perspective traversing up it via the river with my daughter, that it would be great to see it open up again so it can be used by everyone with the added benefit of not getting wet feet while doing it :)

I look forward to hearing from you, and I hope that the community board allows it to become a project.

Kind Regards,

Nim

From: Geoffrey Gaskell
Sent: Tuesday, 5 April 2016 5:15 p.m.
To: LTP
Subject: Annual Plan 2016 / 2017 Submission Featherston

Better street lighting could include lampshades which direct the beams of light downward & prevents dissipated light wasted in all other directions (which is in fact almost as bad for seeing what is in the street as having too little light in the first place). Also astronomers, both professional & amateur would thank the council for such consideration avoiding light pollution across their field of view skywards. In Dunedin, for instance, where directed street lighting is in operation, one can see everything one needs to see (hazardous or not) in the street, but the sky above remains so dark that one can clearly see astronomical features that cannot normally be seen above a city that operates 'normal' & quite wasteful dissolute street lighting.

Martinborough Community Board

Annual Plan Submission - 2016

Contact: Lisa Cornelissen (Chair), 021 652 751, 10 Dublin Street West, Martinborough

This submission is in addition to the MCB AP workshop document previously considered by SWDC in the development of the Annual Plan.

Sewerage

We support the acceleration of stage one of irrigation to land for Martinborough by deferring cyclical maintenance.

Water Supply

If water supply revenue is in excess we believe the rates requirement should be reduced whilst maintaining current service levels. We do not support maintaining current rates revenue in excess to fund unidentified initiatives.

Cycle Strategy

We support the cycle strategy and note the increased volume of touring cyclists as well as heavy volumes of weekend cyclists around the key winery routes. We believe cycle safety and amenity in the urban area should be prioritised (marking routes, cycle parking etc.), followed by development of cycle tracks which will provide safe, enjoyable cycling for residents and visitors.

We ask SWDC to allocate sufficient resources to progress a cycle strategy and to involve MCB in the strategy development. Please also consider allocating funding to the next phases of the winery cycle route, which will improve both pedestrian and cycle safety:

1. Princess Street between New York and Huangarua
2. Cambridge Road between New York and Huangarua

Roading Speed Limits

As per our workshop and early AP input we ask that Council review speed limits in light of new sub divisions and pedestrian and cycle safety:

- Dublin Street school zone – 40km/h
- Jellicoe Street and Lake Ferry Road to Campbell Drive – 50km/h
- Along Princess, Cambridge and Regent Streets between New York and Huangarua/Puruatanga Roads – 50km/h
- Along Huangarua/Puruatanga Roads from Princess to Regent – 50km/h
- Along New York Street down to Todd's Road – 50km/h

Footpaths

We request that SWDC consult formally with the community as part of the next Annual Plan to see if ratepayers would support an increase in rates to speed up maintenance and renewal and begin a new footpath programme. We consistently receive feedback regarding new footpaths and believe it is time to ask the community directly.

Community Board Funding

We support and appreciate Council's funding of Community Boards. We have put in place good processes around grant allocation to ensure money is awarded in accordance with our three year plan and for the benefit of a wide range of people in the Martinborough Ward community.

Town Centre Beautification

We thank the Council for rolling forward these funds and request that they do so again, in light of the Waihinga Centre project. Allocation of these funds will be discussed at a Martinborough Community Board Workshop and at the Community Board meeting on 30th May 2016.

Considine Park

We have attached our prioritised work plan for Considine Park (Appendix 1).

At the time of writing the safety and security items III and V were still to be completed. We still believe that the culvert crossing on Dublin Street West at the end of the walkway is unsafe and should be dealt with promptly. Many plants have been lost during the mulching process and replanting between the walkway and the park perimeter needs to be prioritised.

Economic Development

We support Council's continued involvement in Economic Development locally and regionally through the Wellington Regional Strategy, Wellington Regional Economic Development Agency, Destination Wairarapa and other agencies and local business groups. We support the NZ Cycle Tour for the economic benefit and wide media coverage of the region that it delivers.

Big Belly Rubbish Bins

We support the use of Big Belly rubbish bins at Motorhome Dump Stations and for high use areas including Kitchener Street and Martinborough Square.

We would like to be heard.

Thank you, Lisa Cornelissen

Appendix 1 – Considine Park Workplan

This workplan was agreed at the MCB workshop on 19th March 2015 and formed part of our 2015 LTP submission.

Agreed: that works should be prioritised as follows:

- Safety & Security
- Maintain what we have
- Improve access & usage

Safety & Security

- I. Remove 2 large pine trees beside the holiday park fence so that the leaseholders can safely utilise this area for camping. COMPLETE
- II. Finish the fence between the holiday park leased area and the pool, filling the gap left by the limbing up of the cedar hedge. COMPLETE
- III. Continue the Considine Park post and board fence along the Princess Street pool frontage and around onto Dublin Street West as far as the holiday park entrance, replacing the post and wire fence exposed by the limbing up of the Cedar Hedge.
- IV. Review the chain arrangement to keep vehicles out of pool area when pool not in use, an alternative solution to be undertaken when the new fence goes up. Suggested that we investigate the removable post system at the Rugby Grounds. COMPLETE
- V. It was noted that the current state of the culvert crossing at the end of the walkway on Dublin Street West is a safety issue and needs to be flagged to SWDC promptly.

Maintain what we have

- I. Bulk up existing planting along walkway – it was noted that many plants have been lost
- II. Mulch – MCB to investigate cost effective ways of mulching including using wood chip from arborists work and cheaper suppliers (20) PARTIALLY COMPLETE
- III. Prune olives and other plants which are encroaching on lime path
- IV. Top up lime where necessary

Improve access and usage

- I. MCB to work with Lions and interested parties to procure and plant specimen trees as noted in the development plan. Species to be as recommended. MCB to consider budgeting a donation to Lions for assisting in completing this work.
- II. MCB to provide the two agreed seats along the walkway (funded with the Peter Craig bequest and from MCB budget), then review the need for more.
- III. Provision of picnic table in grassy area outside pool (1) and in Centennial Park (16)
- IV. Lime surface or base course, between the end of the lime paths in Centennial Park and Princess Street (over the grass berm).
- V. Level the Princess Street berm and infill between the concrete footpath and the fence
- VI. Walkway loop extension (9) with associated screen planting – MCB to discuss with Lions to reduce the overall cost of this project

Pool Usage

- I. Timber Pergola (5)
- II. Feature Trees to be included in MCB work to procure and plant specimen trees (10)
- III. Given affordability issues it was agreed that signage, concrete foot path and bollards are not a high priority at this time.

**Martinborough Community Board
Annual Plan Supplementary Submission – 2016**

Contact: Lisa Cornelissen (Chair), 021 652 751, 10 Dublin Street West, Martinborough

This submission is in addition to the MCB AP workshop document previously considered by SWDC in the development of the Annual Plan. It is supplementary to our main submission submitted previously.

Waihinga Centre Destination Playground.

We support the progression of the proposed Waihinga Centre children's playground and surrounding landscape works.

We recommend that \$200,000 total of Pain Estate funds be distributed to this project over a period of 3-5 years and that these funds are directly used to develop and implement the playground plan. Whilst the Pain Estate has reserve levels above this at present we recommend that these funds are distributed over a period of 3 – 5 years starting in the 2016/17 financial year to ensure that sufficient funds remain available for maintenance and other projects.

Maintenance of War memorial in Memorial Square Martinborough.

We are pleased to see the allocation of funds for the Boar War Memorial in the Operations Projects for 2016/17. We ask that this work is progressed prior to ANZAC day 2017.

Town Centre Beautification Funds

We wish to allocate these funds to seating, picnic tables and the purchase/planting of trees identified in the Wraight and Associates proposed landscape plans for the Waihinga Centre Park area. (included under stage 02 of the Waihinga Centre proposal)

We would like to be heard.

Thank you,

Lisa Cornelissen



Frank & Lisa Cornelissen
Martinborough Camping Ltd.
PO Box 199
MARTINBOROUGH

Chief Executive Officer
South Wairarapa District Council
P.O. Box 6
MARTINBOROUGH

16 April 2016

Submission on South Wairarapa District Council AP 2016

We do wish to be heard with respect to this submission.

Martinborough TOP 10 Holiday Park is a Qualmark 4+ park operating on land leased from SWDC in the Considine Park reserve.

In the 12 months to 31st March 2016 we welcomed nearly 7,000 guests. Based on expenditure research carried out by Angus and Associates¹ our guests contributed \$1.5m to the local economy in the 12 months to 31 March 2016.

We are investing strongly in the Holiday Park with additional bathroom facilities completed before Christmas, and extensive landscaping undertaken. This investment will continue with two more cabins started. Rental return to SWDC has increased by 15.6% over the last 12 months.

Sewerage

We support the acceleration of Stage one of irrigation to land by deferring cyclical maintenance.

Water Supply

If water supply revenue is in excess we ask that SWDC reduce the rates requirement whilst maintaining current service levels. We do not support excess revenue being diverted to as yet unidentified initiatives.

¹ Peak Season Holiday Park Visitors 2014/15, Angus & Associates, January 2015



Cycle Strategy

Cycle tourism is growing; we would like to see more cycling parks etc in the urban area and would like to see SWDC prioritising those cycle routes which deliver the most benefit to residents and tourists. This includes links to the National Cycle Way and Vineyard trails.

Road Seal programme

We ask SWDC to include Dublin Street West when considering road sealing priorities. The number of residents on Dublin Street West has increased. Along with winery and vineyard traffic the road has been busy this summer, this combined with the dry weather, has resulted in a major dust problem over the last five months.

Cedars between the Pool fence and the Holiday Park driveway

The cedars will need trimming below the power lines again before summer, they continue to overhang our visitor parking area, making it unusable by campervans. Martinborough Community Board (in Lisa's absence) has agreed that, subject to resource consent, these trees can be removed. We have an indicative quote from Treescape that removing these cedars will cost in the region of \$2,000 plus GST. As these are listed and under power lines we request that SWDC allocate funds from the parks and reserves budget to remove these trees prior to labour weekend. This will allow us to plant a suitable native hedge and build the fence agreed to in the LTP, before the main tourist season begins.

Trees

We note that SWDC will be reviewing listed trees in the 2016/17 operational year. We ask that we are consulted regarding any review of the listed trees in the holiday park leased area.

We ask that Council ensures that the notable trees on the holiday park continue to be checked annually by a qualified arborist and that this is added to the schedule of works prior to Labour Weekend each year.



Sunday bus service between Featherston and Martinborough

We believe that the loss of this service is having a negative impact on weekend tourism in Martinborough. We have seen a reduction in weekend stays by younger Wellington residents and a reduction in Sunday day trippers. We would urge SWDC to continue to advocate to reinstate this bus service.

Storm Drain on Dublin Street West

The storm drain on Dublin Street West is in need of some attention. The stretch along the Holiday Park boundary needs reforming and some of it needs clearing of vegetation. In addition the crossing at the end of the Considine Park walkway is in need of some safety improvements. We request that SWDC allocate funds to reform this storm drain and upgrade the crossing in this Annual Plan. Images of the storm drain and crossing are attached for your reference.

We thank SWDC for the work committed to in the LTP including the removal of the two large pines in Considine Park, the renewal of footpaths on Venice and Naples, cycle strategy development and improvements to the Kitchener / Princess Street intersection.

Thank you for your consideration of this submission.

Regards

Frank & Lisa Cornelissen



Submitted on Saturday, 16 April 2016 - 2:50pm Submitted by anonymous user: [115.188.113.181]
Submitted values are:

--Submitter Details--

Name: Jenny Boyne

Organisation: Rural Women Martinborough Branch

--Submission Hearings--

Do you want to speak to your submission? Yes

Speaking preference: May 25th pm

--Sewerage--

How would you like to see the sewerage upgrade funded:

--Roading--

Are there any streets or roads in the district you think the speed limit should be reviewed?

--Water Supply--

If water supply revenue is in excess should we:

--Cycle Strategy--

Do you support the draft Cycle Strategy?

If not what changes would you like to see?

--Which aspects of the Cycle Strategy are most important to you?--

Please rank from 1-5 with 1 being the most important:

- Urban cycling (safety and marking routes):

- Urban amenity (cycling parks, racks and support):

- Development of linkages (routes between destinations e.g.

Featherston to Martinborough/Greytown):

- Traffic safety (as most cycling is on road a concentration of safer roads for cycling):

- Tourism and development (cycle races and events and tourism trails e.g. vineyards):

Are there any other cycle ways or physical works you would like to see considered in the cycle strategy future works plan?

--Pensioner (Community) Housing--

How would you like to see SWDC pensioner housing managed in the future? Status quo

--Fees and Charges--

Do you support the draft fees and charges?

If not, why?

--Additional Comment--

If you would like to comment or propose something different now is your chance: The Members of Rural Women NZ Martinborough branch supports Council owned and run pensioner Housing. The SWDC needs to retain full ownership and the running of our Districts the Pensioner Housing. Ideally, Council should be looking to add more houses to its port folio due to the ageing population.

Upload submission:

Upload additional information:

Submitted on Saturday, 16 April 2016 - 3:02pm Submitted by anonymous user: [115.188.113.181]
Submitted values are:

--Submitter Details--

Name: Bob, Alistair and Jenny Boyne

Organisation: Tora Station

--Submission Hearings--

Do you want to speak to your submission? Yes

Speaking preference: May 25th pm

--Sewerage--

How would you like to see the sewerage upgrade funded: Loan
funded in line with the 2015/25 Long Term Plan

--Roading--

Are there any streets or roads in the district you think the
speed limit should be reviewed?

--Water Supply--

If water supply revenue is in excess should we: Reduce the rates
requirement while maintaining current service levels

--Cycle Strategy--

Do you support the draft Cycle Strategy?

If not what changes would you like to see?

--Which aspects of the Cycle Strategy are most important to you?--

Please rank from 1-5 with 1 being the most important:

- Urban cycling (safety and marking routes):
- Urban amenity (cycling parks, racks and support):
- Development of linkages (routes between destinations e.g.
Featherston to Martinborough/Greytown):
- Traffic safety (as most cycling is on road a concentration of
safer roads for cycling):
- Tourism and development (cycle races and events and tourism
trails e.g. vineyards):

Are there any other cycle ways or physical works you would like
to see considered in the cycle strategy future works plan?

--Pensioner (Community) Housing--

How would you like to see SWDC pensioner housing managed in the
future? Status quo

--Fees and Charges--

Do you support the draft fees and charges? No

If not, why? Need all our pennies

--Additional Comment--

If you would like to comment or propose something different now is your chance:

Investigate a new alternate water supply for martinboorough Township from the Dry River Catchment

Would like the SWDC to seal more roads in the District.

Widen Bysouth Bend on the Tora Road where there are a number of non reported to Police accidents (11kms from the turn off at Tuturumuri on the Tora Road).

Cut down/ trim trees on the Whakapuni Hill which are impeding drivers views.

Retain all of the SWDC owned Pensioner housing.

Upload submission:

Upload additional information:

SHARE YOUR VIEW ON THE FUTURE



**Feedback must be received by 4pm
Monday 9 May 2016.**

**Please read the consultation
document before providing your
feedback.**

EMAIL: ap@swdc.govt.nz

IN PERSON: Drop form to your local library or
the Council Office in Martinborough

BY POST: Fold and affix a stamp
Council Office Martinborough

FAX: (06) 306 9373

ON LINE: www.swdc.govt.nz

Your name and feedback will be public
documents.

All other personal details will remain private.

Ratepayer:

- ☐ Urban ☐ Rural
☐ Commercial ☐ Non rate payer

Age:

- ☐ 15-24 ☐ 25-34 ☐ 35-44
☐ 45-54 ☐ 55-64 ☐ 65+

Ethnicity:

- ☐ Yes I/We would like to speak to our submission

Speaking Preference:

- ☐ May 25TH am ☐ May 25TH pm

FIRST NAME: Stephen

LAST NAME: Hoggan

ORGANISATION: /

Only if authorised to submit on beh

E-MAIL ADDRESS: /

POSTAL ADDRESS: /

PHONE: /

Sewerage

How would you like to see the sewerage upgrade
funded?

- ☐ Loan funded in line with the 2015/25
Long Term Plan
☐ Defer cyclical maintenance to accelerate stage
one of irrigation to land for Martinborough
and Greytown by June 2017.

Roading

Are there any streets or roads in the district you
think the speed limit should be reviewed that are
not outlined in this document?

Water Supply

If water supply revenue is in excess should we

- ☐ Reduce the rates requirement while
maintaining current service levels
☐ Maintain the current rates revenue diverting
it where necessary or able to other water
supply initiatives.

Cycle Strategy

Do you support the draft cycle strategy?

- ☐ Yes ☐ No

If not what changes would you like to see?

Which aspects of the cycle strategy are most important to you?

(Please rank from 1-5 with 1 being the most
important):

- ☐ Urban cycling (safety and marking routes)
☐ Urban amenity (cycling parks, racks and support)
☐ Development of linkages (routes between
destinations e.g. Featherston to Martinborough/
Greytown)
☐ Traffic safety (as most cycling is on road a
concentration of safer roads for cycling)
☐ Tourism and development (cycle races and
events and tourism trails e.g. vineyards)

Are there any other cycle ways or physical works you
would like to see considered in the cycle strategy
future works plan?

Pensioner (Community) Housing

How would you like to see South Wairarapa District
Council pensioner housing managed in the future?

- ☒ Status quo
☐ Transfer management of pensioner housing
units to a Community Housing Provider
management company (if available)
☐ Gift ownership to Community Housing
Provider
☐ Sell those units (where able) to Community
Housing Provider

Fees and Charges

Do you support the draft fees and charges

- ☐ Yes ☐ No

If not, why?

If you would like to comment or propose something
different now is your chance. (Continue over page if
required)

SHARE YOUR VIEW ON THE FUTURE



**Feedback must be received by 4pm
Monday 9 May 2016.**

**Please read the consultation
document before providing your
feedback.**

EMAIL: ap@swdc.govt.nz

IN PERSON: Drop form to your local library or
the Council Office in Martinborough

BY POST: Fold and affix a stamp
Council Office Martinborough

FAX: (06) 306 9373

ON LINE: www.swdc.govt.nz

Your name and feedback will be public
documents.

All other personal details will remain private.

FIRST NAME:

Tim

LAST NAME:

Law

ORGANISATION:

Only if authorised to submit on behalf of organisation, one per organisation)

EMAIL

POSTAL

P

Sewerage

How would you like to see the sewerage upgrade
funded?

- ☐ Loan funded in line with the 2015/25
Long Term Plan
- ☒ Defer cyclical maintenance to accelerate stage
one of irrigation to land for Martinborough
and Greytown by June 2017.

Roading

Are there any streets or roads in the district you
think the speed limit should be reviewed that are
not outlined in this document?

Water Supply

If water supply revenue is in excess should we

- ☐ Reduce the rates requirement while
maintaining current service levels
- ☒ Maintain the current rates revenue diverting
it where necessary or able to other water
supply initiatives.

Cycle Strategy

Do you support the draft cycle strategy?

- ☒ Yes ☐ No

If not what changes would you like to see?

Which aspects of the cycle strategy are most important to you?

(Please rank from 1-5 with 1 being the most
important):

- ☒ Urban cycling (safety and marking routes)
- ☒ Urban amenity (cycling parks, racks and support)
- ☒ Development of linkages (routes between
destinations e.g. Featherston to Martinborough/
Greytown)
- ☒ Traffic safety (as most cycling is on road a
concentration of safer roads for cycling)
- ☒ Tourism and development (cycle races and
events and tourism trails e.g. vineyards)

Are there any other cycle ways or physical works you
would like to see considered in the cycle strategy
future works plan?

Pensioner (Community) Housing

How would you like to see South Wairarapa District
Council pensioner housing managed in the future?

- ☐ Status quo
- ☒ Transfer management of pensioner housing
units to a Community Housing Provider
management company (if available)
- ☒ Gift ownership to Community Housing
Provider
- ☒ Sell those units (where able) to Community
Housing Provider

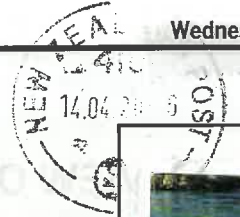
Fees and Charges

Do you support the draft fees and charges

- ☒ Yes ☐ No

If not, why?

If you would like to comment or propose something
different now is your chance. (Continue over page if
required)



South Wairarapa District Council
PO Box 6
Martinborough
5741

PLEASED TO SEE FOCUS ON WASTE WATER (SEW/GRAGE) AND CONCERNED ABOUT THE CONSIDERABLE TIME REQUIRED TO GET FULL LAND DISCHARGE OF TREATED WATER (2035 FOR MARTINBOROUGH, 2030 FOR GREYHOUND & NO DATE FOR FEATHERSTON?). COMMENTS/TABLE REGARDING FEATHERSTON IS CONFUSING.

I'D ALSO LIKE TO SEE PUBLICATION OF GREATER DETAIL OF VOLUMES & QUALITY OF WASTE WATER DISCHARGED INTO RIVERS. THIS WILL HELP FOCUS RATE PAYERS ON THIS REGRETTABLE STATE OF AFFAIRS.

I'D ALSO NOT PUT TOO MUCH EFFORT INTO CYCLEWAYS -

THIS IS A BIT OF A FAD AND SOME ASPECTS ARE BEING

Please complete the feedback form on the previous page, cut out and fold this page then post HANDLED BY INTERES

GROUPS/PRIVATE ENTERPRISE 61

Nina Laid, 13/4/16

SHARE YOUR VIEW ON THE FUTURE



Feedback must be received by 4pm
Monday 9 May 2016.

Please read the consultation
document before providing your
feedback.

EMAIL: ap@swdc.govt.nz

IN PERSON: Drop form to your local library or
the Council Office in Martinborough

BY POST: Fold and affix a stamp
Council Office Martinborough

FAX: (06) 306 9373

ON LINE: www.swdc.govt.nz

Your name and feedback will be public
documents.

All other personal details will remain private.

FIRST NAME: James

LAST NAME: O'Dowd

ORGANISATION: me

Only if authorised to submit on behalf of organisation, one per organisation

EMAIL ADDRESS:

POSTAL ADDRESS:

PH

Wairarapa
who listens?
if you do
to busy around table reading paper work
to hear you

Sewerage

How would you like to see the sewerage upgrade
funded?

- ☒ Loan funded in line with the 2015/25
Long Term Plan
- ☐ Defer cyclical maintenance to accelerate stage
one of irrigation to land for Martinborough
and Greytown by June 2017.

Roading

Are there any streets or roads in the district you
think the speed limit should be reviewed that are
not outlined in this document?

Must Road Maintenance
Engineer a traffic
control at Council
should be aware of
this part of job

Water Supply

If water supply revenue is in excess should we

- ☐ Reduce the rates requirement while
maintaining current service levels
- ☒ Maintain the current rates revenue diverting
it where necessary or able to other water
supply initiatives.

Cycle Strategy

Do you support the draft cycle strategy?

- ☒ Yes ☐ No

If not what changes would you like to see?

Get it done properly
not on a shoe
string/safety

Which aspects of the cycle strategy are most important to you?

(Please rank from 1-5 with 1 being the most
important):

- ☒ Urban cycling (safety and marking routes)
- ☒ Urban amenity (cycling parks, racks and support)
- ☒ Development of linkages (routes between
destinations e.g. Featherston to Martinborough/
Greytown)
- ☒ Traffic safety (as most cycling is on road a
concentration of safer roads for cycling)
- ☒ Tourism and development (cycle races and
events and tourism trails e.g. vineyards)

Are there any other cycle ways or physical works you
would like to see considered in the cycle strategy
future works plan?

Pensioner (Community) Housing

How would you like to see South Wairarapa District
Council pensioner housing managed in the future?

- ☒ Status quo
- ☐ Transfer management of pensioner housing
units to a Community Housing Provider
management company (if available)
- ☐ Gift ownership to Community Housing
Provider
- ☐ Sell those units (where able) to Community
Housing Provider

Fees and Charges

Do you support the draft fees and charges

- ☒ Yes ☐ No

If not, why?

If you would like to comment or propose something
different now is your chance. (Continue over page if
required)

See over



Affix
stamp
here

South Wairarapa District Council
PO Box 6
Martinborough

5741

>>> GOT A QUESTION? VISIT WWW.NZPOST.CO.NZ/HEL

410-07 14 APR 16 CARRIED BY NEW ZEALAND

Work as a team stop the one
upmanship ie Rate payers come
First Give them your best
the 3 Councils cannot today go it
alone get together united we stand
Divided we fall Slogan still stands
"Wairarapa" is what we are all part
of so you Councillors don't think "me"
I think rate payer, then can't go wrong
Right or Right and wrong is no Man's Right.

To Whom It May Concern

I would like to see the speed limit at the northern entrance to Featherston reduced from 70 kph to 50 kph. This stretch of road contains mostly houses as well as two churches. Presently vehicles heading north start speeding up from the time they pass the 50kph sign and are often going well over 70kph by the time they reach the intersection with Boundary Road.

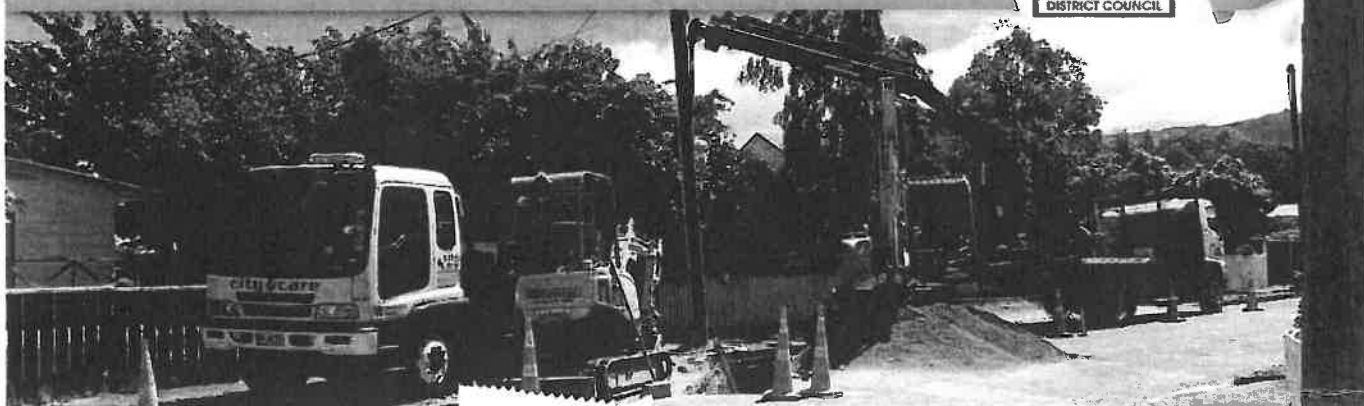
Likewise, vehicles entering Featherston from the north are still travelling at well over 70kph when they reach Boundary Road including heavy truck and trailer units.

The Boundary Road intersection is a busy one with lots of turning traffic including logging and other trucks, often with trailers, as well as other vehicles.

Because of the bend in the road at the corner, vehicles pulling out from Boundary Road don't have great visibility. Reducing the speed limit to 50 kph would mean traffic heading north will take longer to reach the intersection, giving more time for drivers to pull out, making the intersection safer.

David Famularo

SHARE YOUR VIEW ON THE FUTURE



Feedback must be received by 4pm
Monday 9 May 2016.

Please read the consultation
document before providing your
feedback.

EMAIL: ap@swdc.govt.nz

IN PERSON: Drop form to your local library or
the Council Office in Martinborough

BY POST: Fold and affix a stamp
Council Office Martinborough

FAX: (06) 306 9373

ON LINE: www.swdc.govt.nz

Your name and feedback will be public
documents.

All other personal details will remain private.

FIRST NAME: David

LAST NAME: Fox

ORGANISATION: _____

Only if authorised to submit on behalf of organisation, one per organisation)

EMAIL ADDRESS: _____

P

Sewerage

How would you like to see the sewerage upgrade
funded?

- ☐ Loan funded in line with the 2015/25
Long Term Plan
- ☐ Defer cyclical maintenance to accelerate stage
one of irrigation to land for Martinborough
and Greytown by June 2017.

Roading

Are there any streets or roads in the district you
think the speed limit should be reviewed that are
not outlined in this document?

Water Supply

If water supply revenue is in excess should we

- ☐ Reduce the rates requirement while
maintaining current service levels
- ☐ Maintain the current rates revenue diverting
it where necessary or able to other water
supply initiatives.

Cycle Strategy

Do you support the draft cycle strategy?

- ☐ Yes ☐ No

If not what changes would you like to see?

Which aspects of the cycle strategy are most important to you?

(Please rank from 1-5 with 1 being the most
important):

- ☐ Urban cycling (safety and marking routes)
- ☐ Urban amenity (cycling parks, racks and support)
- ☐ Development of linkages (routes between
destinations e.g. Featherston to Martinborough/
Greytown)
- ☐ Traffic safety (as most cycling is on road a
concentration of safer roads for cycling)
- ☐ Tourism and development (cycle races and
events and tourism trails e.g. vineyards)

Are there any other cycle ways or physical works you
would like to see considered in the cycle strategy
future works plan?

Pensioner (Community) Housing

How would you like to see South Wairarapa District
Council pensioner housing managed in the future?

- ☒ Status quo
- ☐ Transfer management of pensioner housing
units to a Community Housing Provider
management company (if available)
- ☐ Gift ownership to Community Housing
Provider
- ☐ Sell those units (where able) to Community
Housing Provider

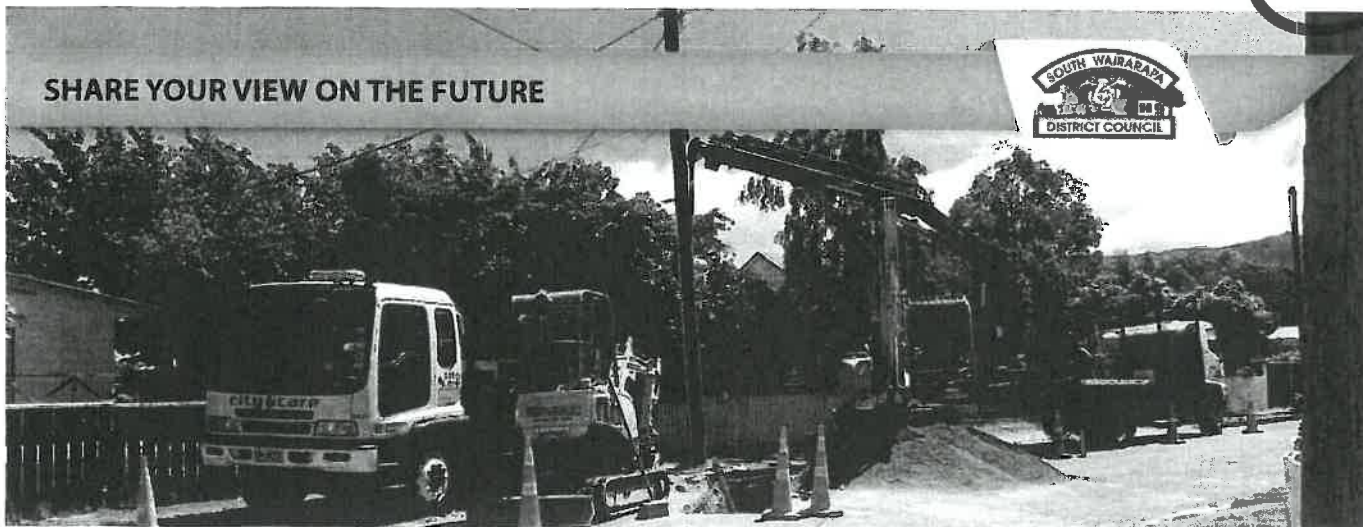
Fees and Charges

Do you support the draft fees and charges

- ☐ Yes ☐ No

If not, why?

If you would like to comment or propose something
different now is your chance. (Continue over page if
required)



**Feedback must be received by 4pm
Monday 9 May 2016.**

**Please read the consultation
document before providing your
feedback.**

EMAIL: ap@swdc.govt.nz

IN PERSON: Drop form to your local library or
the Council Office in Martinborough

BY POST: Fold and affix a stamp
Council Office Martinborough

FAX: (06) 306 9373

ON LINE: www.swdc.govt.nz

Your name and feedback will be public
documents.

All other personal details will remain private.

Ratepayer:

- ☐ Urban ☐ Rural
☐ Commercial ☐ Non rate payer

Age:

- ☐ 15-24 ☐ 25-34 ☐ 35-44
☐ 45-54 ☐ 55-64 ☐ 65+

Ethnicity:

- ☐ Yes I/We would like to speak to our submission

Speaking Preference:

- ☐ May 25TH am ☐ May 25TH pm

FIRST NAME: Ross

LAST NAME: Askew

ORGANISATION: _____

Only if authorised to submit on behalf of organisation, one per organisation)

EMAIL ADDRESS: _____

POSTAL ADDRESS: _____

PHONE: _____

Sewerage

How would you like to see the sewerage upgrade
funded?

- ☐ Loan funded in line with the 2015/25
Long Term Plan
☐ Defer cyclical maintenance to accelerate stage
one of irrigation to land for Martinborough
and Greytown by June 2017.

Roading

Are there any streets or roads in the district you
think the speed limit should be reviewed that are
not outlined in this document?

Water Supply

If water supply revenue is in excess should we

- ☐ Reduce the rates requirement while
maintaining current service levels
☐ Maintain the current rates revenue diverting
it where necessary or able to other water
supply initiatives.

Cycle Strategy

Do you support the draft cycle strategy?

- ☐ Yes ☐ No

If not what changes would you like to see?

Which aspects of the cycle strategy are most important to you?

(Please rank from 1-5 with 1 being the most
important):

- ☐ Urban cycling (safety and marking routes)
☐ Urban amenity (cycling parks, racks and support)
☐ Development of linkages (routes between
destinations e.g. Featherston to Martinborough/
Greytown)
☐ Traffic safety (as most cycling is on road a
concentration of safer roads for cycling)
☐ Tourism and development (cycle races and
events and tourism trails e.g. vineyards)

Are there any other cycle ways or physical works you
would like to see considered in the cycle strategy
future works plan?

Pensioner (Community) Housing

How would you like to see South Wairarapa District
Council pensioner housing managed in the future?

- ☒ Status quo
☐ Transfer management of pensioner housing
units to a Community Housing Provider
management company (if available)
☐ Gift ownership to Community Housing
Provider
☐ Sell those units (where able) to Community
Housing Provider

Fees and Charges

Do you support the draft fees and charges

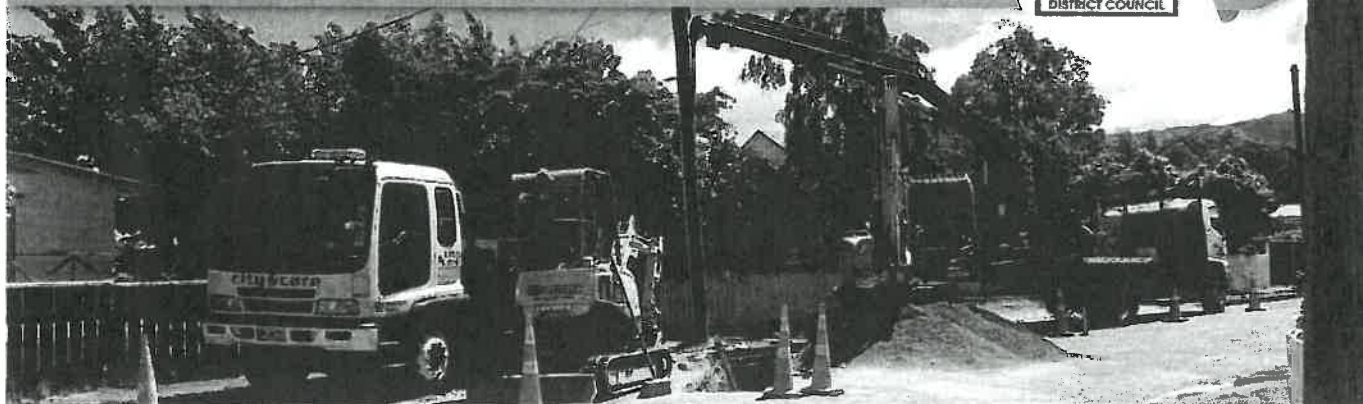
- ☐ Yes ☐ No

If not, why?

If you would like to comment or propose something
different now is your chance. (Continue over page if
required)

BURLIN

SHARE YOUR VIEW ON THE FUTURE



**Feedback must be received by 4pm
Monday 9 May 2016.**

**Please read the consultation
document before providing your
feedback.**

EMAIL: ap@swdc.govt.nz

IN PERSON: Drop form to your local library or
the Council Office in Martinborough

BY POST: Fold and affix a stamp
Council Office Martinborough

FAX: (06) 306 9373

ON LINE: www.swdc.govt.nz

Your name and feedback will be public
documents.

All other personal details will remain private.

Ratepayer:

- ☐ Urban ☐ Rural
☐ Commercial ☐ Non rate payer

Age:

- ☐ 15-24 ☐ 25-34 ☐ 35-44
☐ 45-54 ☐ 55-64 ☐ 65+

Ethnicity:

- ☐ Yes I/We would like to speak to our submission

Speaking Preference:

- ☐ May 25TH am ☐ May 25TH pm

FIRST NAME: Peter

LAST NAME: Eades

ORGANISATION: _____

Only if authorised to submit on behalf of organisation, one per organisation

EMAIL ADDRESS: _____

POSTAL ADDRESS: _____

PHONE: _____

Sewerage

How would you like to see the sewerage upgrade
funded?

- ☐ Loan funded in line with the 2015/25
Long Term Plan
☐ Defer cyclical maintenance to accelerate stage
one of irrigation to land for Martinborough
and Greytown by June 2017.

Roading

Are there any streets or roads in the district you
think the speed limit should be reviewed that are
not outlined in this document?

Water Supply

If water supply revenue is in excess should we

- ☐ Reduce the rates requirement while
maintaining current service levels
☐ Maintain the current rates revenue diverting
it where necessary or able to other water
supply initiatives.

Cycle Strategy

Do you support the draft cycle strategy?

- ☐ Yes ☐ No

If not what changes would you like to see?

Which aspects of the cycle strategy are most important to you?

(Please rank from 1-5 with 1 being the most
important):

- ☐ Urban cycling (safety and marking routes)
☐ Urban amenity (cycling parks, racks and support)
☐ Development of linkages (routes between
destinations e.g. Featherston to Martinborough/
Greytown)
☐ Traffic safety (as most cycling is on road a
concentration of safer roads for cycling)
☐ Tourism and development (cycle races and
events and tourism trails e.g. vineyards)

Are there any other cycle ways or physical works you
would like to see considered in the cycle strategy
future works plan?

Pensioner (Community) Housing

How would you like to see South Wairarapa District
Council pensioner housing managed in the future?

- ☒ Status quo
☐ Transfer management of pensioner housing
units to a Community Housing Provider
management company (if available)
☐ Gift ownership to Community Housing
Provider
☐ Sell those units (where able) to Community
Housing Provider

Fees and Charges

Do you support the draft fees and charges

- ☐ Yes ☐ No

If not, why?

If you would like to comment or propose something
different now is your chance. (Continue over page if
required)

Submitted on Thursday, 21 April 2016 - 9:14am Submitted by anonymous user: [222.153.50.226]
Submitted values are:

--Submitter Details--

Name: Leigh Hay

--Submission Hearings--

Do you want to speak to your submission? No

Speaking preference:

--Sewerage--

How would you like to see the sewerage upgrade funded: Defer cyclical maintenance to accelerate stage one of irrigation to land for Martinborough and Greytown by June 2017

--Roading--

Are there any streets or roads in the district you think the speed limit should be reviewed? Upper end of Wood St speed limit should be reduced.

--Water Supply--

If water supply revenue is in excess should we: Reduce the rates requirement while maintaining current service levels

--Cycle Strategy--

Do you support the draft Cycle Strategy? Yes

If not what changes would you like to see?

--Which aspects of the Cycle Strategy are most important to you?--

Please rank from 1-5 with 1 being the most important:

- Urban cycling (safety and marking routes): 4
- Urban amenity (cycling parks, racks and support): 4
- Development of linkages (routes between destinations e.g. Featherston to Martinborough/Greytown): 4
- Traffic safety (as most cycling is on road a concentration of safer roads for cycling): 4
- Tourism and development (cycle races and events and tourism trails e.g. vineyards): 5

Are there any other cycle ways or physical works you would like to see considered in the cycle strategy future works plan?

--Pensioner (Community) Housing--

How would you like to see SWDC pensioner housing managed in the future? Sell those units (where able) to community housing provider

--Fees and Charges--

Do you support the draft fees and charges? Yes

If not, why?

--Additional Comment--

If you would like to comment or propose something different now is your chance: I am concerned about maintenance of the Town Hall. It requires and immediate chem wash and is now 10 years old and needs repainting. Can you tell me when this is planned.

Upload submission:

Upload additional information:

15 April 2016

Annual Plan
South Wairarapa District Council
PO Box 6
Martinborough

destination
Wairarapa



Destination Wairarapa is the Regional Tourism Organisation (RTO) and one of 30 throughout New Zealand. Destination Wairarapa is an incorporated society with 270+ member businesses who collectively form the Wairarapa tourism proposition.

Vision: Every traveller has the Wairarapa on their “Must Do” list.

Mission: Grow the Wairarapa’s Tourism Revenue to \$232m by 2025, by attracting More Visitors, who Stay Longer and Spend More

Statement of Intent: Destination Wairarapa has a responsibility to major funders and regional stakeholders to deliver economic growth and positive community outcomes from tourism related activities. We are committed to being a great employer and to delivering value to our members and funders. We will do this by ensuring the Wairarapa has the Right Tourism Offering, with Outstanding Delivery, Marketed Effectively.

Cycle Trail Development

South Wairarapa District Council have shown great foresight in developing the off-road cycle trail from Cross Creek to Featherston. Connecting Featherston to the Rimutaka Cycle Trail is going to open a whole new market of families up to the town and the region.

A next step for South Wairarapa would be to connect Featherston with Greytown. Greytown Trails Trust are well advanced on route, design and engineering for a pedestrian and cycle bridge across the Tauherenikau River.

Connecting the two ends of Underhill Road with the Rimutaka Cycle Trail at one end and the Woodside Trail at the other would make an even more exceptional cycling and commuter experience.

Destination Wairarapa would encourage Council to explore with the Greytown Trails Trust how they might assist in completing construction of the pedestrian and cycle bridge.

**Destination Wairarapa Funding**

Destination Wairarapa serves its members by promoting and marketing the region domestically and internationally in a way that supports the marketing and promotional efforts of its members. Destination Wairarapa essentially provides services and performs functions which no other organisation does for the Wairarapa.

New Zealand's tourism industry is ranked as the most important export industry in the country ahead of dairy. While the Wairarapa doesn't hold a gateway status in the industry, it does contribute to the tourists' broader experience of New Zealand and is therefore a valuable contributor to the industry.

Tourism in the Wairarapa generated an estimated \$169 million in 2015 or \$463,000 per day. (Ministry Business, Innovation & Employment)

Destination Wairarapa acknowledges the financial contribution received from Council. It is this financial support which allows Destination Wairarapa to provide its services and marketing functions for the benefit of the district, region and country. The growth of visitor numbers into the Wairarapa through product development marketing for international, domestic, groups, events, business events, media and the provision of i-SITE Visitor Centres are the core functions of Destination Wairarapa. We would like to encourage the continued financial support Council provides to Destination Wairarapa.

In finalising the Annual Plan, Destination Wairarapa asks that continued funding of the organisation please be included to ensure the ongoing promotion of Wairarapa and ultimately maximise the economic benefits of tourism.

Destination Wairarapa would like the opportunity to speak to this submission please.

David Hancock
General Manager
+64 272 272 118

South Wairarapa District Council's Return on Investment with Destination Wairarapa

This document accompanies Destination Wairarapa's submission to the South Wairarapa District Council Annual Plan 2016. The content will help Council understand the return on investment the district and region received from their support of Destination Wairarapa.

**For the 2015-2016 financial year SWDC provided
Destination Wairarapa with \$115,463 + GST
17% of Destination Wairarapa's total Council and Trust funding**

Tourism Revenue into South Wairarapa District

The Ministry of Business, Innovation & Employment (MBIE) produces tourism statistics for each region, Regional Tourism Organisation (RTO) and Territorial Authority (TA) in New Zealand. The most recent report from MBIE shows South Wairarapa TA received \$72 million of the Wairarapa total \$169 million from tourism spend in 2015.

South Wairarapa's tourism spend in 2015 was the highest ever recorded and represents an ROI of approximately 62,357% on the \$115,463 targeted investment in tourism.



In marketing the Wairarapa, Destination Wairarapa knows that it is the cumulative media and marketing results over many years which keeps the regional message fresh with tourists. Destination Wairarapa can't claim to have produced all of the \$72 million tourism spend in 2015 but has presented specific results and activities for the South Wairarapa District.

SHARE YOUR VIEW ON THE FUTURE



Feedback must be received by 4pm
Monday 9 May 2016.

Ratenaver:

Please read the consultation
document before providing your
feedback.

EMAIL: ap@swdc.govt.nz

IN PERSON: Drop form to your local library or
the Council Office in Martinborough

BY POST: Fold and affix a stamp
Council Office Martinborough

FAX: (06) 306 9373

ON LINE: www.swdc.govt.nz

Your name and feedback will be public
documents.

All other personal details will remain private.

FIRST NAME: Roger & Ann

LAST NAME: COVENTRY

ORGANISATION:

Only if authorised to submit on behalf of organisation, one per organisation

EMAIL ADDRESS:

POSTAL ADD

Sewerage

How would you like to see the sewerage upgrade
funded?

- ☐ Loan funded in line with the 2015/25
Long Term Plan
- ☐ Defer cyclical maintenance to accelerate stage
one of irrigation to land for Martinborough
and Greytown by June 2017.

Roading

Are there any streets or roads in the district you
think the speed limit should be reviewed that are
not outlined in this document?

*All schools should be treated the
same way! Why are urban children
given more consideration than our
country children who walk or
ride to schools.*

Water Supply

If water supply revenue is in excess should we

- ☐ Reduce the rates requirement while
maintaining current service levels
- ☒ Maintain the current rates revenue diverting
it where necessary or able to other water
supply initiatives.

Cycle Strategy

Do you support the draft cycle strategy?

- ☐ Yes ☐ No

If not what changes would you like to see?

*Only when funds are available
Not at the expense of other road
& track users.*

Which aspects of the cycle strategy are most important to you?

(Please rank from 1-5 with 1 being the most
important):

- ☒ Urban cycling (safety and marking routes)
- ☐ Urban amenity (cycling parks, racks and support)
- ☐ Development of linkages (routes between
destinations e.g. Featherston to Martinborough/
Greytown)
- ☒ Traffic safety (as most cycling is on road a
concentration of safer roads for cycling)
- ☐ Tourism and development (cycle races and
events and tourism trails e.g. vineyards)

Are there any other cycle ways or physical works you
would like to see considered in the cycle strategy
future works plan?

Pensioner (Community) Housing

How would you like to see South Wairarapa District
Council pensioner housing managed in the future?

- ☒ Status quo
- ☐ Transfer management of pensioner housing
units to a Community Housing Provider
management company (if available)
- ☐ Gift ownership to Community Housing
Provider
- ☐ Sell those units (where able) to Community
Housing Provider

Fees and Charges

Do you support the draft fees and charges

- ☐ Yes ☐ No

If not, why?

*There is nothing for rural people in
any of this review. All rural properties
should be on a flat rate - not land value
regardless of size.*

If you would like to comment or propose something
different now is your chance. (Continue over page if
required)

*Have you ever done a pie graph for the
rural population on where our money
is spent. We are obviously subsidising
all the urban work.*

Affix
stamp
here

South Wairarapa District Council
PO Box 6
Martinborough
5741

Rural
Rates

Storm water	NO
Econ Cult etc	NO
Resource Mang	NO
Covenan etc	?
Solid Waste	NO
Public Protect.	NO
Sewerage	NO
Water Supply	NO
Amenities	NO
Land Transp.	NO

Isn't it about time you gave an honest assessment for all the rural properties that you rate. Many folk have to transport their own children to schools as no bus is provided. so use the massive rates to provide this service.
How do they ever get to or use any of the amenities that they pay for?

So where does the \$8000 plus rate get spent for these larger properties - many on poorly kept roads, long distances from the nearest town.

SHARE YOUR VIEW ON THE FUTURE



Feedback must be received by 4pm
Monday 9 May 2016.

Please read the consultation
document before providing your
feedback.

EMAIL: ap@swdc.govt.nz

IN PERSON: Drop form to your local library or
the Council Office in Martinborough

BY POST: Fold and affix a stamp
Council Office Martinborough

FAX: (06) 306 9373

ON LINE: www.swdc.govt.nz

Your name and feedback will be public
documents.

All other personal details will remain private.

FIRST NAME: Noleene White

LAST NAME: WHITE

ORGANISATION: PRIVATE

Only if authorised to submit on behalf of organisation, one per organisation)

EMAIL ADDRESS:

POSTAL ADDRESS:

PHONE:

Sewerage

How would you like to see the sewerage upgrade
funded?

- ☒ Loan funded in line with the 2015/25
Long Term Plan
- ☐ Defer cyclical maintenance to accelerate stage
one of irrigation to land for Martinborough
and Greytown by June 2017.

Roading

Are there any streets or roads in the district you
think the speed limit should be reviewed that are
outlined in this document?

Water Supply

If water supply revenue is in excess should we

- ☐ Reduce the rates requirement while
maintaining current service levels
- ☒ Maintain the current rates revenue diverting
it where necessary or able to other water
supply initiatives.

Cycle Strategy

Do you support the draft cycle strategy?

- ☒ Yes ☐ No

If not what changes would you like to see?

Which aspects of the cycle strategy are most important to you?

(Please rank from 1-5 with 1 being the most
important):

- ☒ Urban cycling (safety and marking routes)
- ☒ Urban amenity (cycling parks, racks and support)
- ☒ Development of linkages (routes between
destinations e.g. Featherston to Martinborough/
Greytown)
- ☒ Traffic safety (as most cycling is on road a
concentration of safer roads for cycling)
- ☒ Tourism and development (cycle races and
events and tourism trails e.g. vineyards)

Are there any other cycle ways or physical works you
would like to see considered in the cycle strategy
future works plan?

Pensioner (Community) Housing

How would you like to see South Wairarapa District
Council pensioner housing managed in the future?

- ☐ Status quo
- ☒ Transfer management of pensioner housing
units to a Community Housing Provider
management company (if available)
- ☐ Gift ownership to Community Housing
Provider
- ☐ Sell those units (where able) to Community
Housing Provider

Fees and Charges

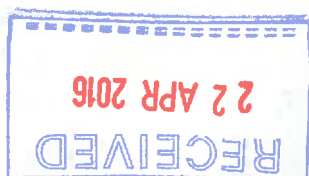
Do you support the draft fees and charges

- ☐ Yes ☐ No

If not, why?

Don't have any
options

If you would like to comment or propose something
different now is your chance. (Continue over page if
required)



South Wairarapa District Council
PO Box 6
Martinborough
5741

Visualize a grand welcome to Martinborough the place
to go when its a Mall between Ohio Street and
the Square (all the parked cars etc totally takes away
the entry to our town).

Back to back benches (2) placed in the centre with
over head cover,

The traffic can be easily diverted, and street
entertainment encouraged with permission — Looking
ahead — wow

Submitted on Friday, 29 April 2016 - 12:25pm Submitted by anonymous user: [203.160.121.97]
Submitted values are:

--Submitter Details--

Name: Steve Bill

--Submission Hearings--

Do you want to speak to your submission? No

Speaking preference:

--Sewerage--

How would you like to see the sewerage upgrade funded: Defer cyclical maintenance to accelerate stage one of irrigation to land for Martinborough and Greytown by June 2017

--Roading--

Are there any streets or roads in the district you think the speed limit should be reviewed? Underhill Road, 100kmh limit reduced to 80kmh and zone shifted further west.

--Water Supply--

If water supply revenue is in excess should we: Maintain the current rates revenue diverting it where necessary or able to other water supply initiatives

--Cycle Strategy--

Do you support the draft Cycle Strategy? Yes

If not what changes would you like to see?

--Which aspects of the Cycle Strategy are most important to you?--

Please rank from 1-5 with 1 being the most important:

- Urban cycling (safety and marking routes): 4
- Urban amenity (cycling parks, racks and support): 2
- Development of linkages (routes between destinations e.g. Featherston to Martinborough/Greytown): 5
- Traffic safety (as most cycling is on road a concentration of safer roads for cycling): 3
- Tourism and development (cycle races and events and tourism trails e.g. vineyards): 1

Are there any other cycle ways or physical works you would like to see considered in the cycle strategy future works plan? More signage to make non cyclists aware of cycle routes

--Pensioner (Community) Housing--

How would you like to see SWDC pensioner housing managed in the future? Sell those units (where able) to community housing provider

--Fees and Charges--

Do you support the draft fees and charges? Yes

If not, why?

--Additional Comment--

If you would like to comment or propose something different now is your chance:

Upload submission:

Upload additional information:

Submitted on Sunday, 1 May 2016 - 11:40am Submitted by anonymous user: [115.188.49.74]
Submitted values are:

--Submitter Details--

Name: Alistair Boyne

--Submission Hearings--

Do you want to speak to your submission? Yes

Speaking preference: May 25th am

--Sewerage--

How would you like to see the sewerage upgrade funded:

--Roading--

Are there any streets or roads in the district you think the speed limit should be reviewed? Would like to see more seal on rural Roads

--Water Supply--

If water supply revenue is in excess should we:

--Cycle Strategy--

Do you support the draft Cycle Strategy?

If not what changes would you like to see?

--Which aspects of the Cycle Strategy are most important to you?--

Please rank from 1-5 with 1 being the most important:

- Urban cycling (safety and marking routes):
- Urban amenity (cycling parks, racks and support):
- Development of linkages (routes between destinations e.g. Featherston to Martinborough/Greytown):
- Traffic safety (as most cycling is on road a concentration of safer roads for cycling):
- Tourism and development (cycle races and events and tourism trails e.g. vineyards):

Are there any other cycle ways or physical works you would like to see considered in the cycle strategy future works plan?

--Pensioner (Community) Housing--

How would you like to see SWDC pensioner housing managed in the future? Status quo

--Fees and Charges--

Do you support the draft fees and charges? No
 If not, why? Budgeting for essentials is fine, discretionary feel good stuff is acceptable when there is surplus. Not a flash year for the rural sector.

--Additional Comment--

If you would like to comment or propose something different now is your chance:

Secured Access to the Public over private farmland to foreshore. There has been a precedent set whereby the Council has engaged in a formal agreement with a landowner in exchange for a substantial fee for Public access over private property to the foreshore for recreational fishers. (suspects it more than covers the Property Annual rates)

Would like the council to replicate agreement for recreational surfers and divers over our land. Exception being that proceeds would be paid to a charitable organisation of our choice.

Funding Town Hall upgrade and extension

Concerned for potential Budget blow out of refurbishment and additional building in light of the recent article in regard to Carterton Events centre. Would like the SW Council to put measures in place to request the Paid professionals overseeing this project to be accountable financially should the Project also experience similar cost over runs as with the CDC. Would really prefer to have a turn key price agreed before letting the project, though this is probably unrealistic, it mitigates the fright when the bills start to roll in and secures the completion of the project to ones expectations and to the budget.

Would also like the Council not to use any additional money from the Council Reserves Fund or sell off Parks and recreational areas, nor impose an additional rate to fund any short fall for this project.

Upload submission:

Upload additional information:

Submitted on Saturday, 30 April 2016 - 9:27am Submitted by anonymous user: [122.62.60.92]
Submitted values are:

--Submitter Details--

Name: Trish Higginson

--Submission Hearings--

Do you want to speak to your submission? Yes

Speaking preference: May 25th am

--Sewerage--

How would you like to see the sewerage upgrade funded: Loan
funded in line with the 2015/25 Long Term Plan

--Roading--

Are there any streets or roads in the district you think the
speed limit should be reviewed? Dublin Street, Martinborough
around the School

--Water Supply--

If water supply revenue is in excess should we: Reduce the rates
requirement while maintaining current service levels

--Cycle Strategy--

Do you support the draft Cycle Strategy? Yes

If not what changes would you like to see?

--Which aspects of the Cycle Strategy are most important to you?--

Please rank from 1-5 with 1 being the most important:

- Urban cycling (safety and marking routes): 3

- Urban amenity (cycling parks, racks and support): 3

- Development of linkages (routes between destinations e.g.

Featherston to Martinborough/Greytown): 3

- Traffic safety (as most cycling is on road a concentration of
safer roads for cycling): 4

- Tourism and development (cycle races and events and tourism
trails e.g. vineyards): 3

Are there any other cycle ways or physical works you would like
to see considered in the cycle strategy future works plan?

Footpath upgrading in Martinborough, the state of the Town
footpaths is disgraceful, particularly along Kitchener Street,
considering this is a tourist town I feel we need to be more well
presented, currently mobility scooters have trouble getting along
the footpaths.

--Pensioner (Community) Housing--

How would you like to see SWDC pensioner housing managed in the future? Status quo

--Fees and Charges--

Do you support the draft fees and charges? No

If not, why? Rates are already too expensive

--Additional Comment--

If you would like to comment or propose something different now is your chance: I would like to see the spending on the Waihinga Centre stopped, \$6.5m is way too expensive for this community and is out of context with other community needs. I do not believe a small group of people on their own agenda should be able to hold the entire district to ransom for a non-essential, out of control, over-priced unsightly building. There are better, cheaper options and SWDC should be looking at these in proper consultation with the entire community, not just a select few.

Upload submission:

Upload additional information:

Submitted on Friday, 29 April 2016 - 9:02pm Submitted by anonymous user: [122.62.68.183]
Submitted values are:

--Submitter Details--

Name: C Holley & C Miller

--Submission Hearings--

Do you want to speak to your submission? No

Speaking preference:

--Sewerage--

How would you like to see the sewerage upgrade funded: Defer cyclical maintenance to accelerate stage one of irrigation to land for Martinborough and Greytown by June 2017

--Roading--

Are there any streets or roads in the district you think the speed limit should be reviewed?

Change the 70kmph zone leaving Featherston to go North to Greytown to a 50kmph zone.

Change the 70kmph zone leaving Featherston to go over Rimutaka Hill to a 50kmph zone.

--Water Supply--

If water supply revenue is in excess should we: Maintain the current rates revenue diverting it where necessary or able to other water supply initiatives

--Cycle Strategy--

Do you support the draft Cycle Strategy? Yes

If not what changes would you like to see?

--Which aspects of the Cycle Strategy are most important to you?--

Please rank from 1-5 with 1 being the most important:

- Urban cycling (safety and marking routes): 4
- Urban amenity (cycling parks, racks and support): 3
- Development of linkages (routes between destinations e.g. Featherston to Martinborough/Greytown): 1
- Traffic safety (as most cycling is on road a concentration of safer roads for cycling): 2
- Tourism and development (cycle races and events and tourism trails e.g. vineyards): 5

Are there any other cycle ways or physical works you would like to see considered in the cycle strategy future works plan? We would like to all the district's cycle ways developed to NZTA

standards to ensure that we attract their ongoing funding for maintenance and further extensions.

--Pensioner (Community) Housing--

How would you like to see SWDC pensioner housing managed in the future? Status quo

--Fees and Charges--

Do you support the draft fees and charges? Yes

If not, why?

--Additional Comment--

If you would like to comment or propose something different now is your chance:

We would like to see more effort in controlling pest plants in Featherston's reserves including a publicly available management plan.

The path across from the Featherston police station beside the train track is in disrepair. There are large paving stones missing. It'd be great to get this fixed up. Also the nearby train mosaic needs fixing (or removing altogether if it can't be done). The plan mentions an initiative to fence the Featherston playground. If so, we would hope that the design was somewhat tasteful. (Please, please, please, can we not have some dreary, cheap chickenwire or metal construction? Last time a fence was erected around a public amenity in Featherston, it was around the Featherston Swimming Pool. This was a functional and aesthetic failure. It makes the pool look like a prison and it now gets pummelled by dust-laden winds (especially from the direction of the landfill just over the road.)

Upload submission:

Upload additional information:

Submitted on Friday, 29 April 2016 - 7:27pm Submitted by anonymous user: [118.90.106.72]
Submitted values are:

--Submitter Details--

Name: stephen church

--Submission Hearings--

Do you want to speak to your submission? No

Speaking preference:

--Sewerage--

How would you like to see the sewerage upgrade funded: Loan
funded in line with the 2015/25 Long Term Plan

--Roading--

Are there any streets or roads in the district you think the
speed limit should be reviewed?

--Water Supply--

If water supply revenue is in excess should we: Reduce the rates
requirement while maintaining current service levels

--Cycle Strategy--

Do you support the draft Cycle Strategy? Yes

If not what changes would you like to see?

--Which aspects of the Cycle Strategy are most important to you?--

Please rank from 1-5 with 1 being the most important:

- Urban cycling (safety and marking routes): 1
- Urban amenity (cycling parks, racks and support): 4
- Development of linkages (routes between destinations e.g.
Featherston to Martinborough/Greytown): 2
- Traffic safety (as most cycling is on road a concentration of
safer roads for cycling): 1
- Tourism and development (cycle races and events and tourism
trails e.g. vineyards): 3

Are there any other cycle ways or physical works you would like
to see considered in the cycle strategy future works plan?

--Pensioner (Community) Housing--

How would you like to see SWDC pensioner housing managed in the
future? Transfer management of pensioner housing units to a
community housing provider management company (if available)

--Fees and Charges--

Do you support the draft fees and charges? No

If not, why? Rates in South Wairarapa are already high when comparing to all other districts in NZ - I have compared them all on a per capita basis. I have not seen much creativity around productively lowering or maintaining existing rates - an achievement we could be proud of. It is always easy to spend other people's money and increase debt loads for major projects. I realise our lack of population density is a drawback but where is the #8 wire mentality when it comes to keeping things cost effective?

--Additional Comment--

If you would like to comment or propose something different now is your chance: Don't spend money from our District Reserves to fund shortfall in WC funding!

Upload submission:

Upload additional information:

The results of this submission may be viewed at:

<http://www.swdc.govt.nz/node/736/submission/572>

SHARE YOUR VIEW ON THE FUTURE



Feedback must be received by 4pm
Monday 9 May 2016.

Please read the consultation
document before providing your
feedback.

EMAIL: ap@swdc.govt.nz

IN PERSON: Drop form to your local library or
the Council Office in Martinborough

BY POST: Fold and affix a stamp
Council Office Martinborough

FAX: (06) 306 9373

ON LINE: www.swdc.govt.nz

Your name and feedback will be public
documents.

All other personal details will remain private.

FIRST NAME: Sue

LAST NAME: Baker

ORGANISATION: _____

Only if authorised to submit on behalf of organisation, one per organisation)

EMAIL ADDRESS: _____

Sewerage

How would you like to see the sewerage upgrade
funded?

- ☐ Loan funded in line with the 2015/25
Long Term Plan
- ☐ Defer cyclical maintenance to accelerate stage
one of irrigation to land for Martinborough
and Greytown by June 2017.

Roading

Are there any streets or roads in the district you
think the speed limit should be reviewed that are
not outlined in this document?

Water Supply

If water supply revenue is in excess should we

- ☐ Reduce the rates requirement while
maintaining current service levels
- ☐ Maintain the current rates revenue diverting
it where necessary or able to other water
supply initiatives.

Cycle Strategy

Do you support the draft cycle strategy?

- ☐ Yes ☐ No

If not what changes would you like to see?

Which aspects of the cycle strategy are most important to you?

(Please rank from 1-5 with 1 being the most
important):

- ☐ Urban cycling (safety and marking routes)
- ☐ Urban amenity (cycling parks, racks and support)
- ☐ Development of linkages (routes between
destinations e.g. Featherston to Martinborough/
Greytown)
- ☐ Traffic safety (as most cycling is on road a
concentration of safer roads for cycling)
- ☐ Tourism and development (cycle races and
events and tourism trails e.g. vineyards)

Are there any other cycle ways or physical works you
would like to see considered in the cycle strategy
future works plan?

Pensioner (Community) Housing

How would you like to see South Wairarapa District
Council pensioner housing managed in the future?

- ☐ Status quo
- ☐ Transfer management of pensioner housing
units to a Community Housing Provider
management company (if available)
- ☐ Gift ownership to Community Housing
Provider
- ☐ Sell those units (where able) to Community
Housing Provider

Fees and Charges

Do you support the draft fees and charges

- ☐ Yes ☐ No

If not, why?

If you would like to comment or propose something
different now is your chance. (Continue over page if
required)



South Wairarapa District Council
PO Box 6
Martinborough
5741



I wish to see the 70K speed limit reduced from the Eastern entrance to Feilding ending at Donalds Bridge reduced to 50k.

I am constantly woken during the night and early hours of the morning with the sound of heavy truck and trailer units plus commuter traffic travelling through at 70Ks. During daylight hours it is hard to hold a conversation at the front of the property over the traffic noise. There seems to have been a marked increase in traffic over the years so surely it is time to consider reducing the speed limit.

88 R. A. Butcher 53

Please complete the feedback form on the previous page, cut out and fold this page then post

SHARE YOUR VIEW ON THE FUTURE



Feedback must be received by 4pm
Monday 9 May 2016.

Please read the consultation
document before providing your
feedback.

FIRST NAME: Patrick

LAST NAME: Rail

ORGANISATION: _____

EMAIL: ap@swdc.govt.nz

IN PERSON: Drop form to your local library or
the Council Office in Martinborough

BY POST: Fold and affix a stamp
Council Office Martinborough

FAX: (06) 306 9373

ON LINE: www.swdc.govt.nz

Your name and feedback will be public
documents.

All other personal details will remain private.

Sewerage

How would you like to see the sewerage upgrade
funded?

- ☒ Loan funded in line with the 2015/25
Long Term Plan
- ☐ Defer cyclical maintenance to accelerate stage
one of irrigation to land for Martinborough
and Greytown by June 2017.

Roading

Are there any streets or roads in the district you
think the speed limit should be reviewed that are
not outlined in this document?

Reducing speed
limit outside my
home - 50 Km

Water Supply

If water supply revenue is in excess should we

- ☐ Reduce the rates requirement while
maintaining current service levels
- ☒ Maintain the current rates revenue diverting
it where necessary or able to other water
supply initiatives.

Cycle Strategy

Do you support the draft cycle strategy?

- ☒ Yes ☐ No

If not what changes would you like to see?

Which aspects of the cycle strategy are most important to you?

(Please rank from 1-5 with 1 being the most
important):

- ☒ Urban cycling (safety and marking routes)
- ☐ Urban amenity (cycling parks, racks and support)
- ☐ Development of linkages (routes between
destinations e.g. Featherston to Martinborough/
Greytown)
- ☐ Traffic safety (as most cycling is on road a
concentration of safer roads for cycling)
- ☐ Tourism and development (cycle races and
events and tourism trails e.g. vineyards)

Are there any other cycle ways or physical works you
would like to see considered in the cycle strategy
future works plan?

Pensioner (Community) Housing

How would you like to see South Wairarapa District
Council pensioner housing managed in the future?

- ☒ Status quo
- ☐ Transfer management of pensioner housing
units to a Community Housing Provider
management company (if available)
- ☐ Gift ownership to Community Housing
Provider
- ☐ Sell those units (where able) to Community
Housing Provider

Fees and Charges

Do you support the draft fees and charges

- ☒ Yes ☐ No

If not, why?

If you would like to comment or propose something
different now is your chance. (Continue over page if
required)

SHARE YOUR VIEW ON THE FUTURE



**Feedback must be received by 4pm
Monday 9 May 2016.**

**Please read the consultation
document before providing your
feedback.**

EMAIL: ap@swdc.govt.nz

IN PERSON: Drop form to your local library or
the Council Office in Martinborough

BY POST: Fold and affix a stamp
Council Office Martinborough

FAX: (06) 306 9373

ON LINE: www.swdc.govt.nz

Your name and feedback will be public
documents.

All other personal details will remain private.

Ratepayer:

- ☐ Urban ☐ Rural
☐ Commercial ☐ Non rate payer

Age:

- ☐ 15-24 ☐ 25-34 ☐ 35-44
☐ 45-54 ☐ 55-64 ☐ 65+

Ethnicity:

- ☐ Yes I/We would like to speak to our submission

Speaking Preference:

- ☐ May 25th am ☐ May 25th pm

FIRST NAME: B

LAST NAME: BENZON

ORGANISATION: _____

Only if authorised to submit on behalf of organisation, one per organisation)

EMAIL ADDRESS: _____

POSTAL _____

Sewerage

How would you like to see the sewerage upgrade
funded?

- ☐ Loan funded in line with the 2015/25
Long Term Plan
☐ Defer cyclical maintenance to accelerate stage
one of irrigation to land for Martinborough
and Greytown by June 2017.

Roading

Are there any streets or roads in the district you
think the speed limit should be reviewed that are
not outlined in this document?

Reduce Speed
limit to 50
from Feta Singh

Water Supply

If water supply revenue is in excess should we

- ☐ Reduce the rates requirement while
maintaining current service levels
☐ Maintain the current rates revenue diverting
it where necessary or able to other water
supply initiatives.

Cycle Strategy

Do you support the draft cycle strategy?

- ☐ Yes ☐ No

If not what changes would you like to see?

Which aspects of the cycle strategy are most important to you?

(Please rank from 1-5 with 1 being the most
important):

- ☐ Urban cycling (safety and marking routes)
☐ Urban amenity (cycling parks, racks and support)
☐ Development of linkages (routes between
destinations e.g. Featherston to Martinborough/
Greytown)
☐ Traffic safety (as most cycling is on road a
concentration of safer roads for cycling)
☐ Tourism and development (cycle races and
events and tourism trails e.g. vineyards)

Are there any other cycle ways or physical works you
would like to see considered in the cycle strategy
future works plan?

Pensioner (Community) Housing

How would you like to see South Wairarapa District
Council pensioner housing managed in the future?

- ☐ Status quo
☐ Transfer management of pensioner housing
units to a Community Housing Provider
management company (if available)
☐ Gift ownership to Community Housing
Provider
☐ Sell those units (where able) to Community
Housing Provider

Fees and Charges

Do you support the draft fees and charges

- ☐ Yes ☐ No

If not, why?

If you would like to comment or propose something
different now is your chance. (Continue over page if
required)

SHARE YOUR VIEW ON THE FUTURE



Feedback must be received by 4pm
Monday 9 May 2016.

Please read the consultation
document before providing your
feedback.

EMAIL: ap@swdc.govt.nz

IN PERSON: Drop form to your local library or
the Council Office in Martinborough

BY POST: Fold and affix a stamp
Council Office Martinborough

FAX: (06) 306 9373

ON LINE: www.swdc.govt.nz

Your name and feedback will be public
documents.

All other personal details will remain private.

Ratepayer:

- ☐ Urban ☐ Rural
☐ Commercial ☐ Non rate payer

Age:

- ☐ 15-24 ☐ 25-34 ☐ 35-44
☐ 45-54 ☐ 55-64 ☐ 65+

Ethnicity:

- ☐ Yes I/We would like to speak to our submission

Speaking Preference:

- ☐ May 25th am ☐ May 25th pm

FIRST NAME: J.U.

LAST NAME: BENZON

ORGANISATION: _____

Only if authorised to submit on behalf of organisation, one per organisation!

EMAIL ADDRESS: _____

POSTAL _____

Sewerage

How would you like to see the sewerage upgrade
funded?

- ☐ Loan funded in line with the 2015/25
Long Term Plan
☐ Defer cyclical maintenance to accelerate stage
one of irrigation to land for Martinborough
and Greytown by June 2017.

Roading

Are there any streets or roads in the district you
think the speed limit should be reviewed that are
not outlined in this document?

Reduces speed
limit to 50
from F5th Sign

Water Supply

If water supply revenue is in excess should we

- ☐ Reduce the rates requirement while
maintaining current service levels
☐ Maintain the current rates revenue diverting
it where necessary or able to other water
supply initiatives.

Cycle Strategy

Do you support the draft cycle strategy?

- ☐ Yes ☐ No

If not what changes would you like to see?

Which aspects of the cycle strategy are most important to you?

(Please rank from 1-5 with 1 being the most
important):

- ☐ Urban cycling (safety and marking routes)
☐ Urban amenity (cycling parks, racks and support)
☐ Development of linkages (routes between
destinations e.g. Featherston to Martinborough/
Greytown)
☐ Traffic safety (as most cycling is on road a
concentration of safer roads for cycling)
☐ Tourism and development (cycle races and
events and tourism trails e.g. vineyards)

Are there any other cycle ways or physical works you
would like to see considered in the cycle strategy
future works plan?

Pensioner (Community) Housing

How would you like to see South Wairarapa District
Council pensioner housing managed in the future?

- ☐ Status quo
☐ Transfer management of pensioner housing
units to a Community Housing Provider
management company (if available)
☐ Gift ownership to Community Housing
Provider
☐ Sell those units (where able) to Community
Housing Provider

Fees and Charges

Do you support the draft fees and charges

- ☐ Yes ☐ No

If not, why?

If you would like to comment or propose something
different now is your chance. (Continue over page if
required)

SHARE YOUR VIEW ON THE FUTURE



Feedback must be received by 4pm
Monday 9 May 2016.

Please read the consultation
document before providing your
feedback.

EMAIL: ap@swdc.govt.nz

IN PERSON: Drop form to your local library or
the Council Office in Martinborough

BY POST: Fold and affix a stamp
Council Office Martinborough

FAX: (06) 306 9373

ON LINE: www.swdc.govt.nz

Your name and feedback will be public
documents.
All other personal details will remain private.

Ratenaver:

☐ 55-64

d like to speak to our submission

reference:

☐ May 25TH pm

FIRST NAME: IAN

LAST NAME: FARLEY

ORGANISATION: _____

Only if authorised to submit on behalf of organisation, one per organisation)

EMAIL ADDRESS: _____

POS

PHONE

Sewerage

How would you like to see the sewerage upgrade
funded?

- ☐ Loan funded in line with the 2015/25
Long Term Plan
- ☒ Defer cyclical maintenance to accelerate stage
one of irrigation to land for Martinborough
and Greytown by June 2017.

Roading

Are there any streets or roads in the district you
think the speed limit should be reviewed that are
not outlined in this document?

Water Supply

If water supply revenue is in excess should we

- ☒ Reduce the rates requirement while
maintaining current service levels
- ☐ Maintain the current rates revenue diverting
it where necessary or able to other water
supply initiatives.

Cycle Strategy

Do you support the draft cycle strategy?

- ☒ Yes ☐ No

If not what changes would you like to see?

Which aspects of the cycle strategy
are most important to you?

(Please rank from 1-5 with 1 being the most
important):

- ☒ Urban cycling (safety and marking routes)
- ☒ Urban amenity (cycling parks, racks and support)
- ☒ Development of linkages (routes between
destinations e.g. Featherston to Martinborough/
Greytown)
- ☒ Traffic safety (as most cycling is on road a
concentration of safer roads for cycling)
- ☒ Tourism and development (cycle races and
events and tourism trails e.g. vineyards)

Are there any other cycle ways or physical works you
would like to see considered in the cycle strategy
future works plan?

Pensioner (Community) Housing

How would you like to see South Wairarapa District
Council pensioner housing managed in the future?

- ☐ Status quo
- ☐ Transfer management of pensioner housing
units to a Community Housing Provider
management company (if available)
- ☐ Gift ownership to Community Housing
Provider
- ☒ Sell those units (where able) to Community
Housing Provider

Fees and Charges

Do you support the draft fees and charges

- ☒ Yes ☐ No

If not, why?

If you would like to comment or propose something
different now is your chance. (Continue over page if
required)
